

COVID-19

(coronavirus disease 2019)

COMMUNITY FORUM

January 22, 2021



Your Internet browser may be loading the page from its cache and may not reflect the most recent data. Please refresh your page and/or cache to view the most current version of the data. This dashboard provides surveillance information about the Coronavirus Disease 2019 (COVID-19). Data used to produce this dashboard is updated daily but is considered preliminary and subject to change as a result of ongoing investigations being conducted by the Imperial County Public Health Department.

Please note that only diagnostic tests from approved laboratories are reflected on this dashboard.

Total Tests
115,941
 Total Evaluaciones

Negative Tests
89,885
 Evaluaciones Negativas

Cases Pending Investigation
37
 Casos en Investigación

Out of County Cases
407
 Casos Fuera Del Condado

Out of Country Cases
167
 Casos Fuera Del País

Total Positive Cases
25,445
 Total de Casos Positivos

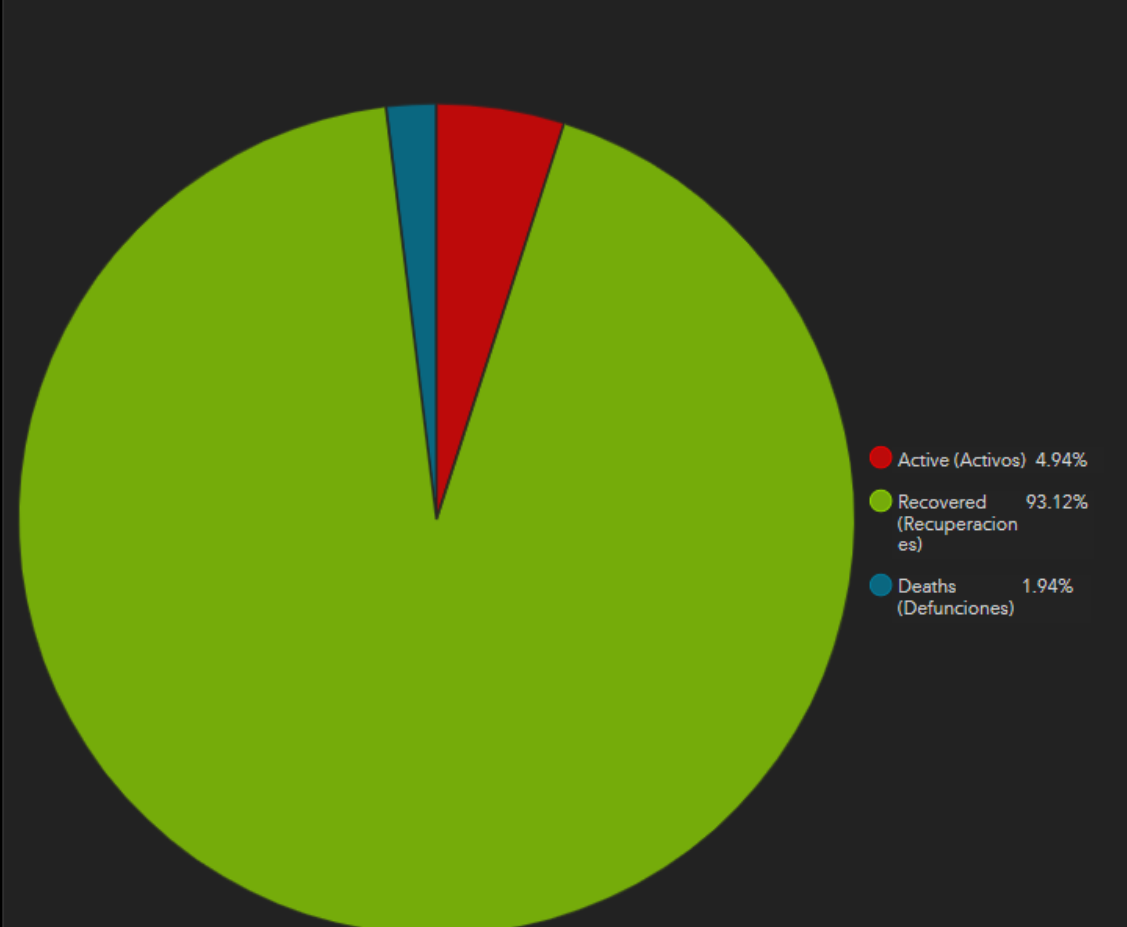
Active Cases
1,257
 Casos Activos

Recovered
23,695
 Recuperados

Deaths
493
 Defunciones

Data Last Updated (Última Actualización):
1/22/2021 9:00 AM

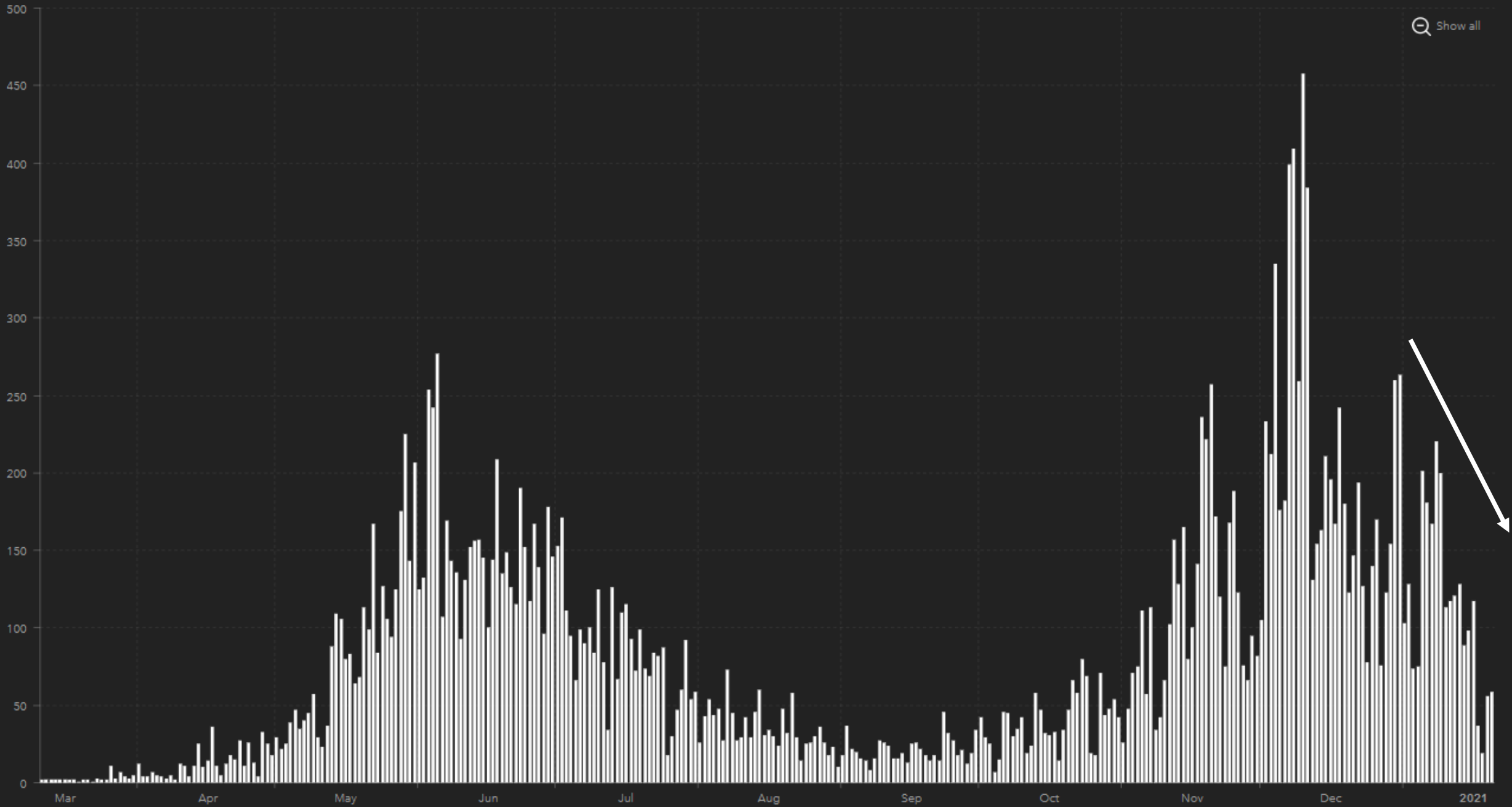
Case Overview



Cases by Location

92231	Total Cases: 6,905
	Active Cases: 266
	Total Recovered: 6,471
	Deaths: 168
92243	Total Cases: 6,579
	Active Cases: 300
	Total Recovered: 6,128
	Deaths: 151
92227	Total Cases: 3,889
	Active Cases: 260
	Total Recovered: 3,562
	Deaths: 67
92251	Total Cases: 3,355
	Active Cases: 142
	Total Recovered: 3,181
	Deaths: 32
92233	Total Cases: 1,386
	Active Cases: 90
	Total Recovered: 1,292
	Deaths: 4
92249	Total Cases: 1,065
	Active Cases: 43
	Total Recovered: 1,000
	Deaths: 22
92250	Total Cases: 984
	Active Cases: 52
	Total Recovered: 898
	Deaths: 34
92274	Total Cases: 439

Positive Cases by Result Date

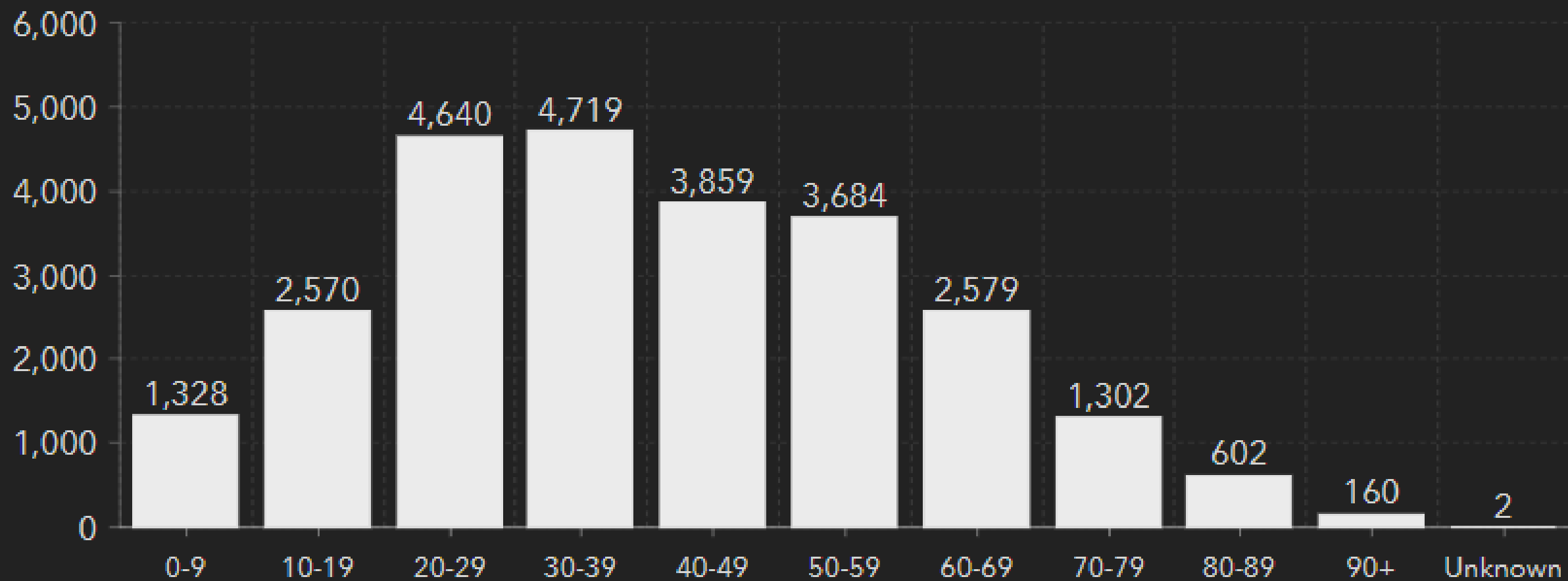


Hospitals Census | *Censo Hospitalario*



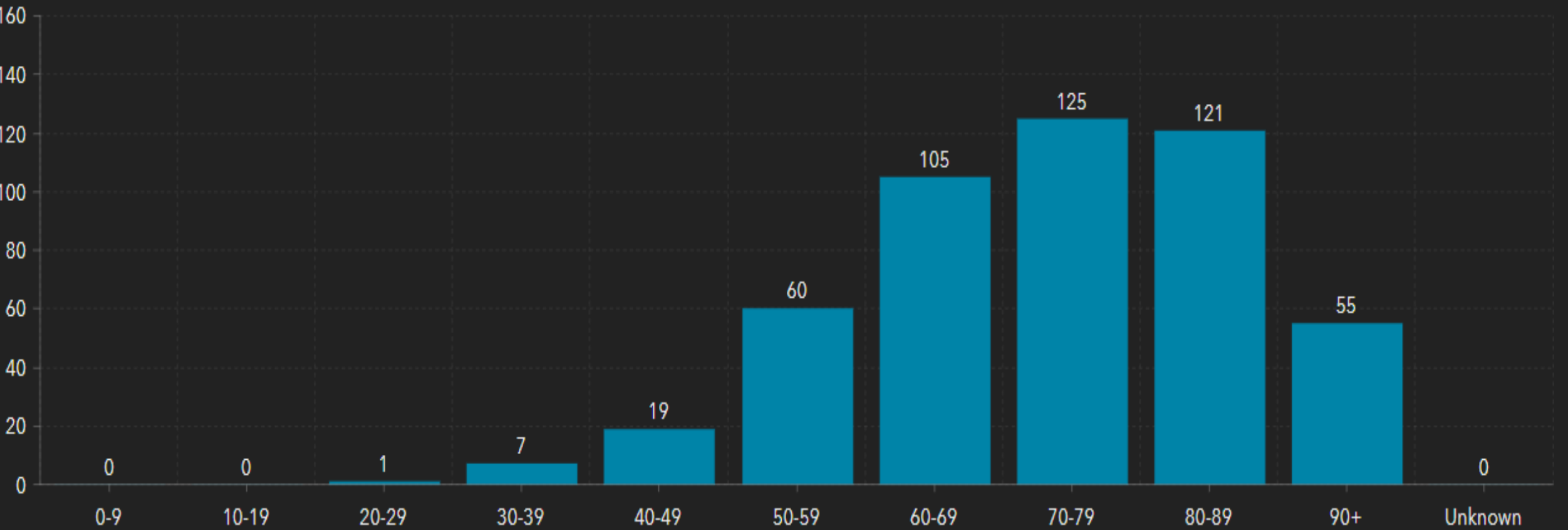
● Hospitalized COVID-19 Positive Patients
● Suspected COVID-19 Positive Patients

Total Positive Cases by Age Group



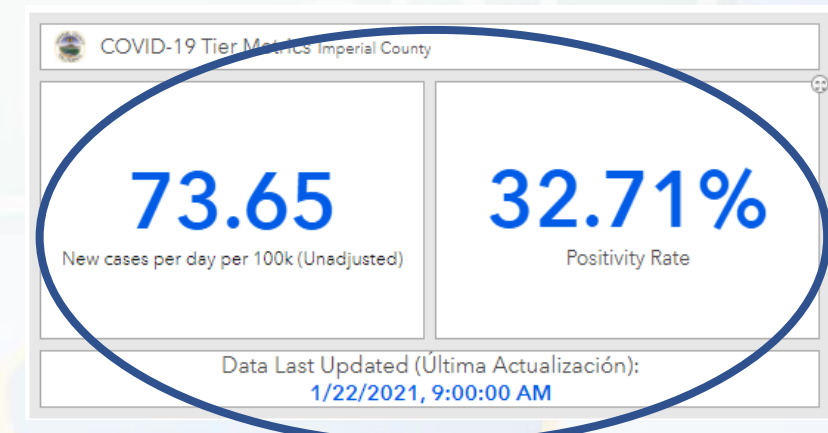
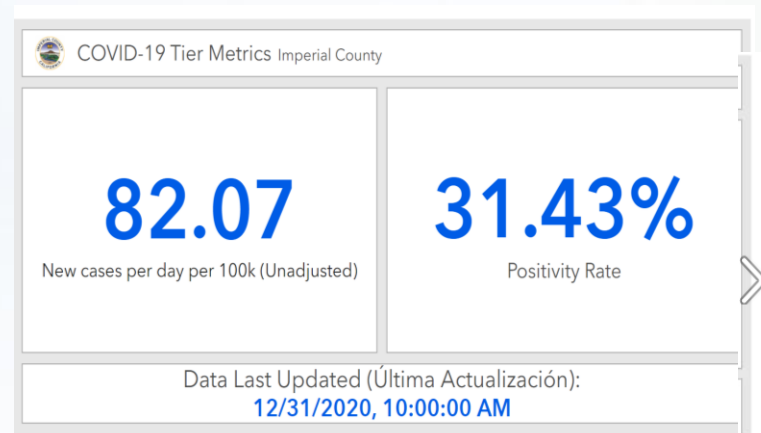
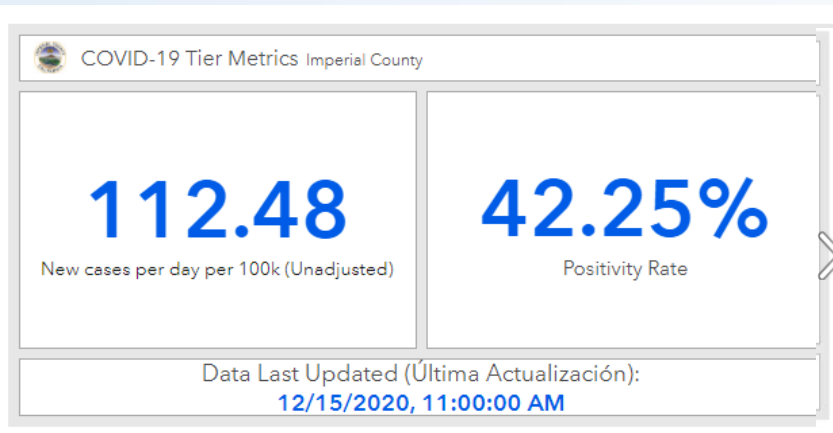
Total de Casos Positivos por Grupo de Edad

Deaths by Age Group | *Defunciones por Grupo de Edad*



Metricas Locales

Source: <http://www.icphd.org/health-information-&-resources/healthy-facts/covid-19/covid-19-metrics/>

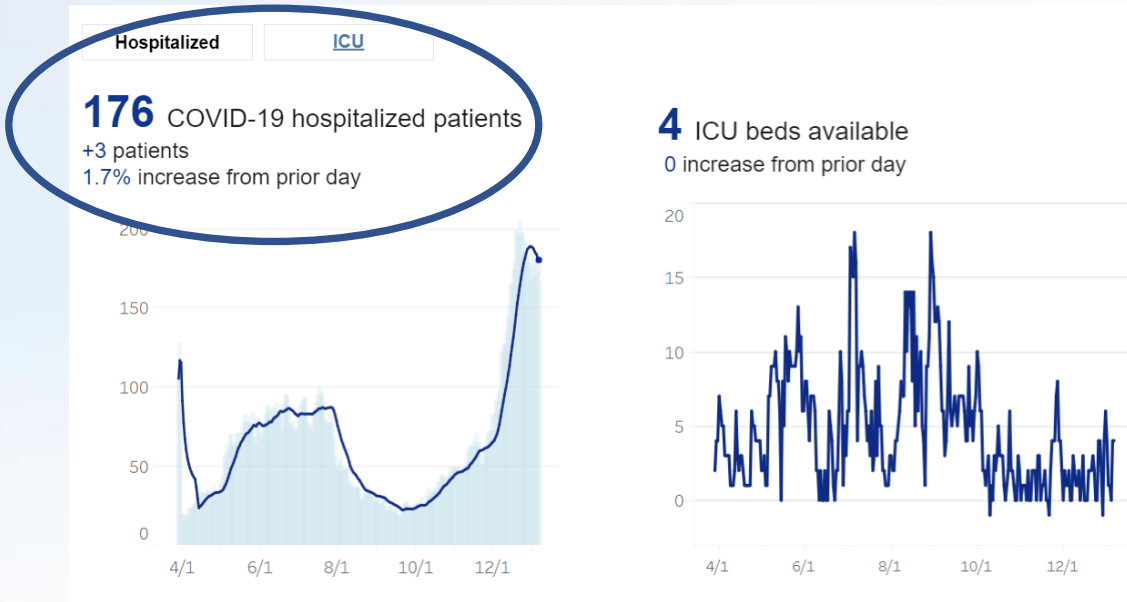


The figures above differ from the state calculations in the following ways:
Labs are counted by result date, Includes inmate population, case rate does not include an adjustment factor

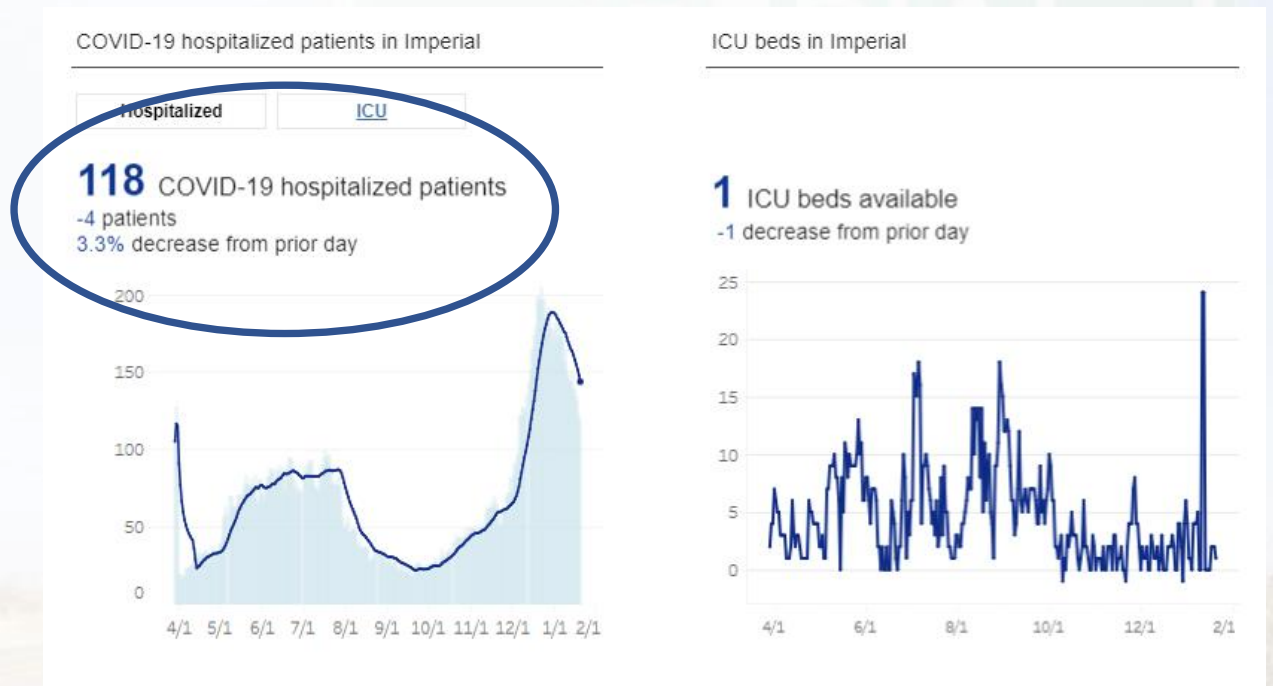
COVID-19 Hospitalizaciones & Disponibilidad de Camas de Cuidado Intensivos

<https://covid19.ca.gov/state-dashboard/>

Actualización: enero 8, 2021



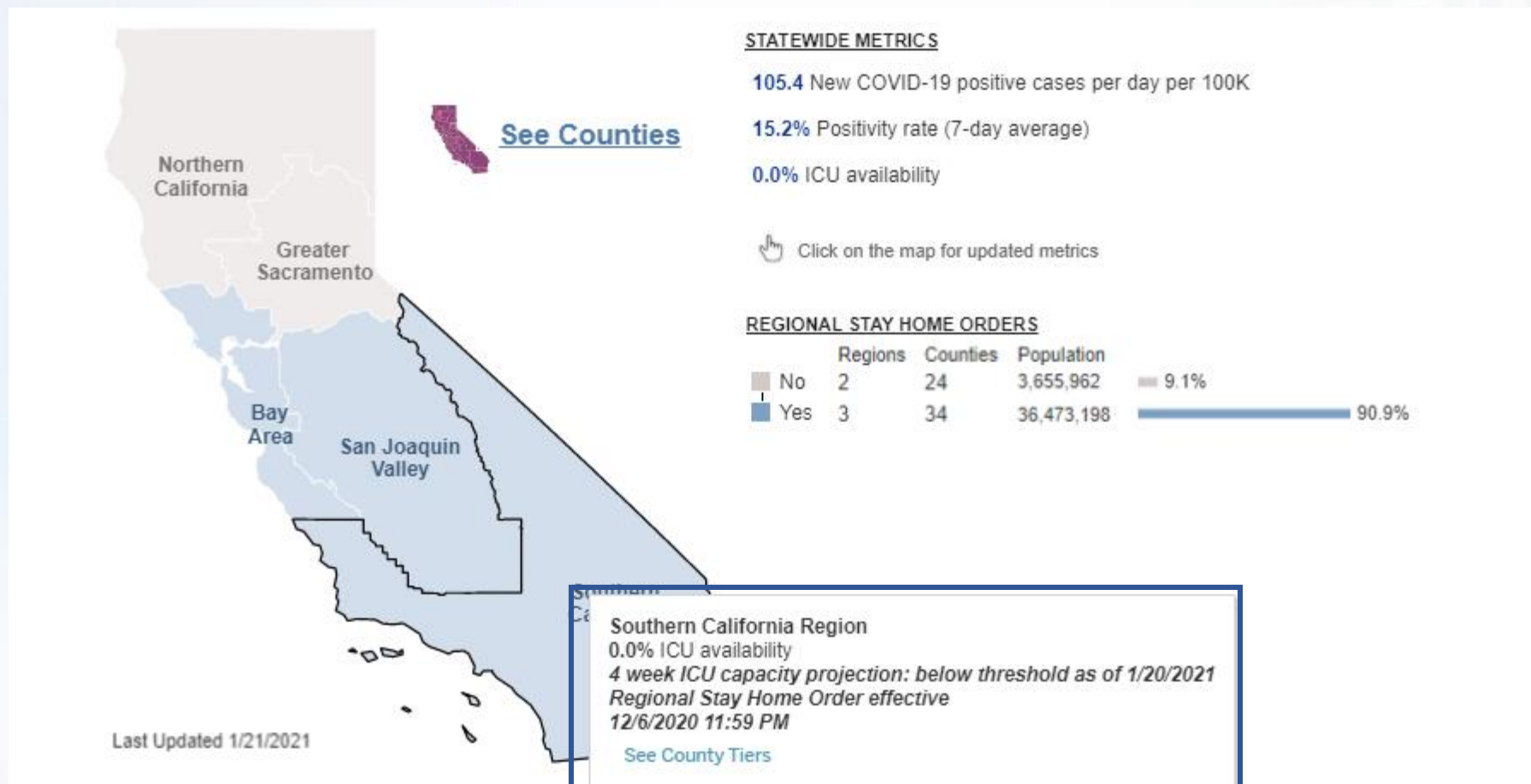
Actualización: enero 22, 2021



- 2-day lag
- Data changes by the hour

ICU Availability

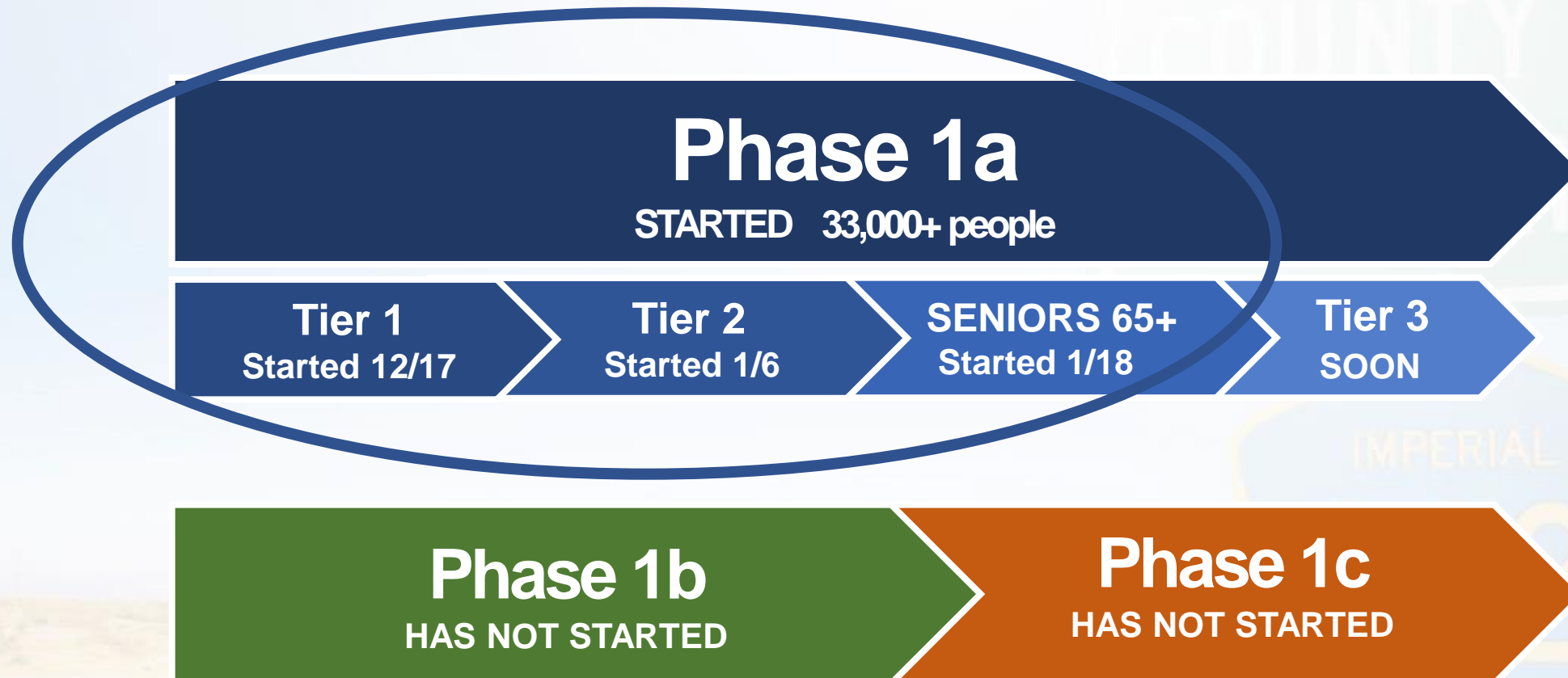
Source: <https://covid19.ca.gov/stay-home-except-for-essential-needs/#regional-stay-home-order>



Southern California Region: Imperial, Inyo, Los Angeles, Mono, Orange, Riverside, San Bernardino, San Diego, San Luis Obispo, Santa Barbara, Ventura

- Hospitals submit information on the total number of available staffed ICU beds daily to the state.
 - Information includes both existing staffed ICU beds & staffed ICU surge beds. To calculate regional ICU capacity, the total number of adult ICU beds is calculated by removing neonatal ICU beds (NICU) and pediatric intensive care unit beds (PICU), as well as standardizing current adult ICU capacity

COVID-19 Vaccine Prioritization Overview



Subject to change based on information from the California Department of Public Health or State of California

COVID-19 Vaccine % Reached

TIER 1 – 2,430 highest/high risk (99% reached)

Imperial County Public Health vaccinators

EMS/EMT

Hospitals

Dialysis Centers

Residential and Inpatient SUD Treatment facilities

Residential and inpatients of mental health/vaccinators

TIER 2* – 5,122 highest/high risk (~24% reached)

Staff of intermediate care facilities for persons who need non-continuous nursing supervision & supportive care

Staff of Home health care & in-home supportive service providers

Community Health Workers, including Promotoras(es)

Public Health field staff

Staff of outpatient SUD treatment, mental health facilities, and crisis stabilization units.

Staff of primary care clinics, community clinics, correctional facility clinics, urgent care clinics

TIER 3* – 749 high/highest risk

All Tier 3 groups (Staff of specialty clinics, laboratory workers, dental/oral health, pharmacy, mortuary)

65 and older – 26,074 (~3.5% reached)

*Number subject to change based on assessment

COVID-19 Vaccine Received/Used as of 1/21

Received

1st DOSE

7,525

(Includes 500 doses from lot that was 'paused')

2nd DOSE

3,250

(Includes 1,200 doses from lot that was 'paused')

Used

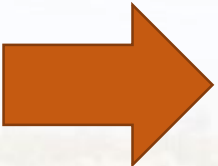
1st DOSES USED

4,560

2nd DOSES USED

105

DECEMBER 17, 2020 – JANUARY 21, 2021



Phase 1



COVID-19 Vaccine Pending to Receive

Pending THIS WEEK

0 Doses

Pending NEXT Week

1,475 doses

COVID-19 Vaccine Moderna Lot 41L20A

<https://www.cdph.ca.gov/Programs/OPA/Pages/NR21-025.aspx>

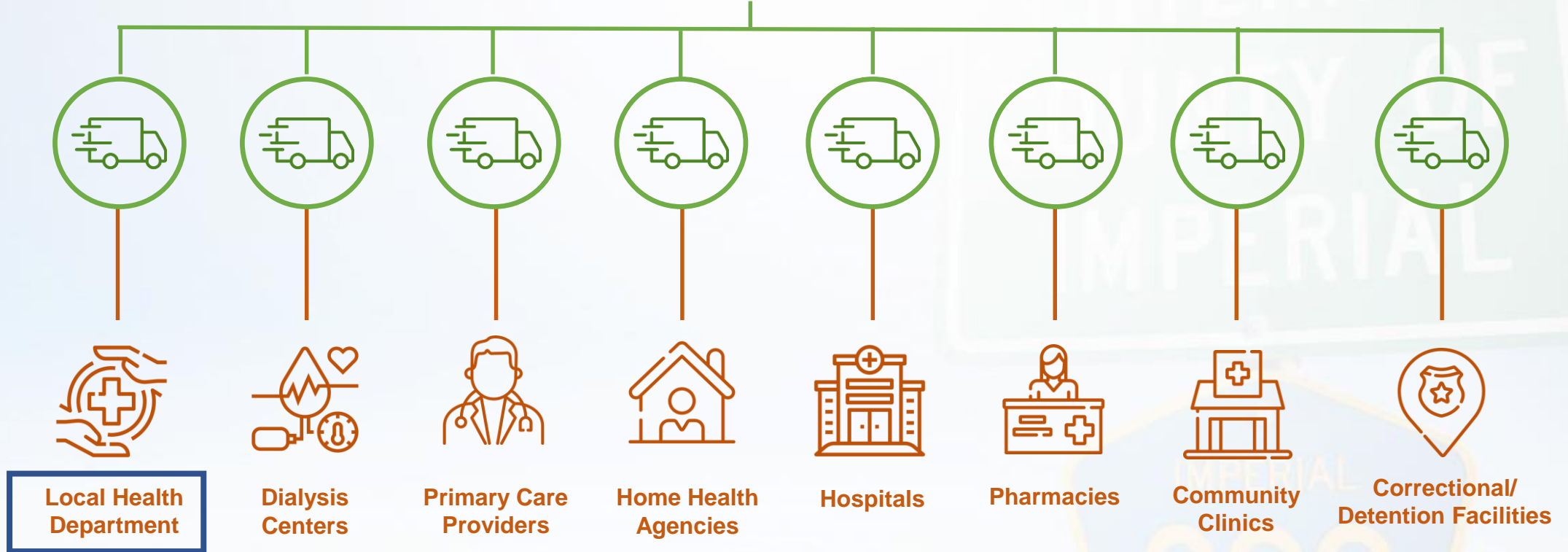
Moderna Vaccine
1,700 doses in Imperial County

Source: California Department of Public Health, January 20, 2021

“Out of an abundance of caution, we recommended that providers pause the distribution of Moderna COVID-19 vaccine lot 41L20A on Sunday evening. Yesterday, we convened the Western States Scientific Safety Review Workgroup and additional allergy and immunology specialists to examine the evidence collected. We had further discussions with the County of San Diego Department of Public Health, the FDA, CDC and manufacturer, and found no scientific basis to continue the pause. **Providers that paused vaccine administration from Moderna Lot 41L20A can immediately resume.** “These findings should continue to give Californians confidence that vaccines are safe and effective, and that the systems put in place to ensure vaccine safety are rigorous and science-based. Members of my family who have qualified to receive the vaccine as health care workers or because of their age have already received the COVID-19 vaccine, and I encourage every Californian to get the vaccine when it’s their turn.”

COVID-19 Vaccine Direct Shipments to Providers

Manufacturer/Distribution Center



SIDE NOTES

State government to send vaccine directly to California Department of Corrections, State hospitals, Kaiser Permanente, Dignity Health, Sutter Health, Adventist Health, UC Health, AHMC Health, Providence St. Joseph Health.

Federal government to be sent to tribal clinics, VA, Federal Bureau of Prisons, Department of Defense, Department of State, Long-term Care Pharmacy Partnership Program.

COVID-19 Mass Vaccination

Vaccination through established healthcare provider networks is key to increasing access to the vaccine and reaching more people in our community

- 25 currently enrolled provider sites in Imperial County, including the Public Health Department
- 40+ potential providers in Imperial County

Phase 1c
HAS NOT STARTED



- Details
- View Indicators
- Rank
- Pool
- Create Custom Score
- Data Upload
- Report/Export
- About

ENROLLED COVID-19 Vaccine PROVIDERS

- 11 El Centro
- 6 Brawley
- 2 Calexico
- 1 Holtville
- 1 Niland
- 1 Westshores
- 1 Winterhaven
- 1 IHS/Ft. Yuma

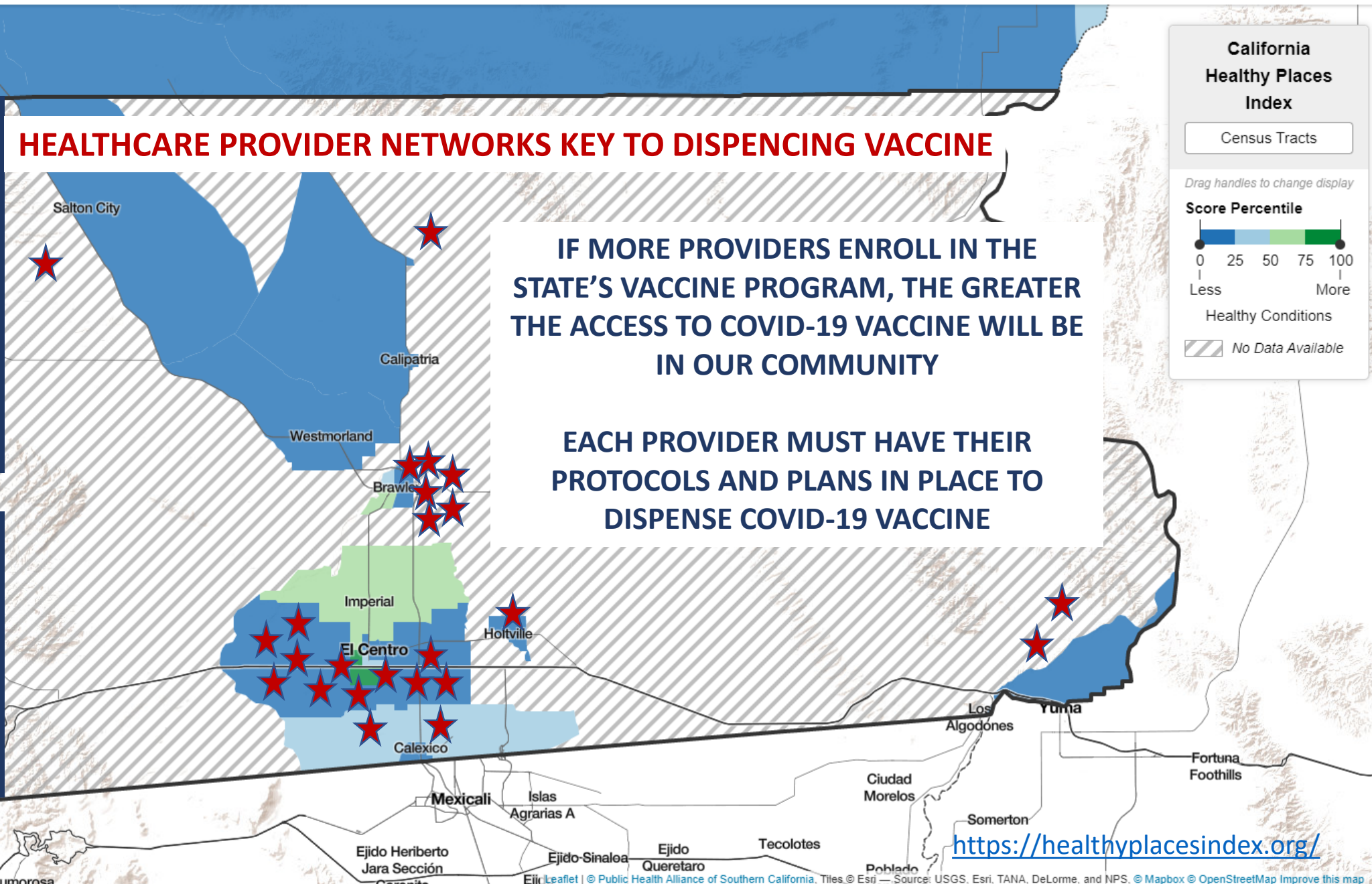
POTENTIAL PROVIDERS:

- 20+ El Centro
- 10+ Brawley
- 10+ Calexico
- 1 Holtville
- 1 Imperial

HEALTHCARE PROVIDER NETWORKS KEY TO DISPENSING VACCINE

IF MORE PROVIDERS ENROLL IN THE STATE'S VACCINE PROGRAM, THE GREATER THE ACCESS TO COVID-19 VACCINE WILL BE IN OUR COMMUNITY

EACH PROVIDER MUST HAVE THEIR PROTOCOLS AND PLANS IN PLACE TO DISPENSE COVID-19 VACCINE



California Healthy Places Index

Census Tracts

Drag handles to change display

Score Percentile

0 25 50 75 100

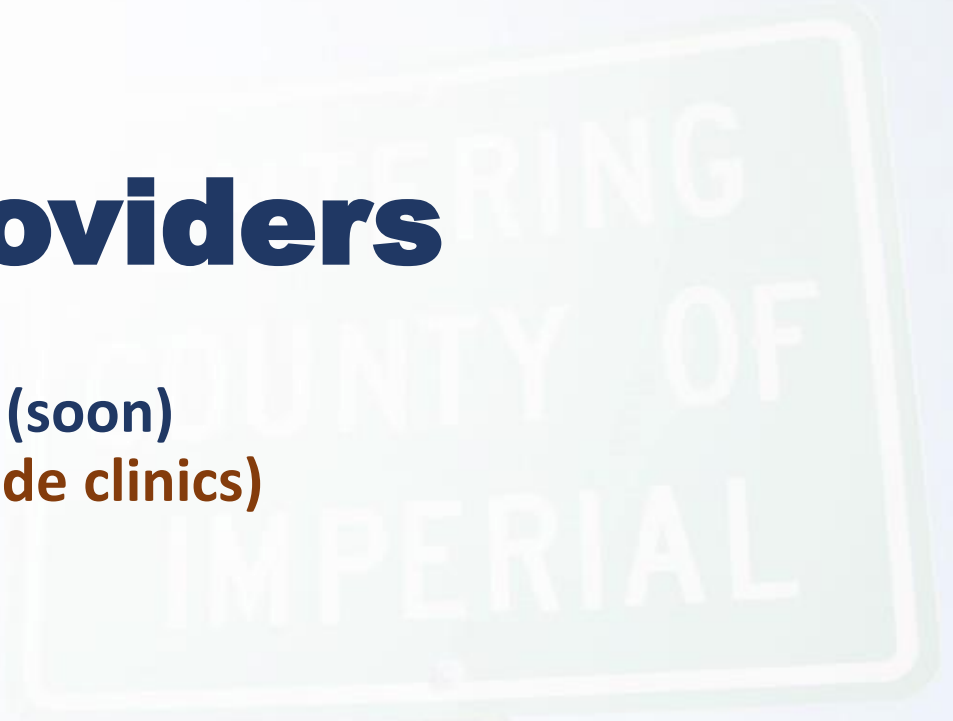
Less More

Healthy Conditions

No Data Available

COVID-19 Vaccine Providers

- Tier 1 (2nd dose), Tier 2 (currently), Tier 3 (soon)
Public Health vaccinating (drive-in/curbside clinics)
- 65 and older (1/18)
Enrolled providers currently vaccinating
 - Hospitals (2 sites)
 - Federally Qualified Health Centers (3 sites)
 - Pharmacies (4)



COVID-19 Vaccination for Imperial County Seniors (65+) Starts January 18th

Please note the following:

- Limited vaccine is received weekly and it is anticipated that more will be available in the near future.
- To find out where you can receive the vaccine, please visit the Imperial County Public Health Department website at www.icphd.org.
- Remember to use a face cover, practice social distance, and stay home if you're sick.



For more information, please call
442-265-7033 or 442-265-7040

   @icpublichealth

COVID-19 Vaccine Public Health Dept. Clinics

Started Vaccinating 12/17

- **Tier 1: Travel Team** (small scale)

- California EMS Authority/CalMAT (Alternate Care Site)
- Global Medical Response (AMR/REACH)
- Mercy Air
- Imperial County Fire Department
- City of Calexico Fire Department
- City of Holtville Fire Department
- City of El Centro Fire Department
- City of Brawley Fire Department
- City of Calipatria Fire Department
- City of Westmoreland Fire Department
- Staff of substance use disorder (SUD) treatment and mental health facilities
- Public Health vaccinating staff

- **Tiers 1 & 2: Drive-in/Curbside Clinics** (small/mid scale)

- Vaccinating Tier 1 Groups with 2nd doses
- Vaccinating Tier 2 Groups from **80+ agencies** with 1st doses, appointment-based



COVID-19 Vaccine – Public Health Clinics

Mid- to Large Scale events (cool weather)

- Outdoor venues (e.g., fairgrounds, parking lots)
- Curbside/Drive-thru
- Initial kick-off in Central Area, subsequently moving to south and north ends
- Appointment-based
- Dates TBD, depends on supply available

Mid- to Large Scale events (warm weather)

- Indoor venues (i.e., multi-purpose centers, gyms, etc.)

Ongoing Efforts

- Continue coordinate with local stakeholders
- **Follow-up with non-enrolled providers – encourage them to complete application by end of January**
- **Recruit/train additional local vaccinators & support staff/volunteers**
- Secure vaccinator/logistical support from the state and/or federal government
- Continue to plan mass targeted clinics (i.e., farmworkers, homeless, education, childcare, etc.)
- Volunteer opportunities to support local COVID-19 response efforts
<https://healthcarevolunteers.ca.gov/>

Please note the Imperial County Public Health Department will be closed to all walk-in services for the public. Department staff will be available to provide assistance by phone to members of the community who have questions related to any of the Department's [essential services](#).

Phone assistance will be available Monday through Friday from 8:00 am to 12:00 pm and 1:00 pm to 5:00 pm. The office will be closed for lunch from 12:00 pm to 1:00 pm. This shall remain in effect until further notice.

[Contact Us](#)

[How Do I...? ▾](#)

Search



Imperial County Public Health Department

[Home](#)

[About Us](#)

[News Media](#)

[Alerts and Recalls](#)

[Be Prepared](#)

[Get Involved](#)

[Report a Health Issue](#)

[Forms](#)

What's Open in Imperial County?

Open



[Health Information And Resources](#) / [Healthy Facts](#) / [Covid 19](#)

Health Information and Resources

[Data & Statistics](#)

[Health & Wellness](#)

[Health Insurance](#)

[Healthy Facts](#)

[COVID-19](#)

[COVID-19 Data](#)

[COVID-19 Vaccine](#)

[Community COVID-19 Update](#)

[Worksite Specific Protection Plan](#)

[Home Isolation & Quarantine](#)

[COVID-19 Testing](#)

[Department Essential Services](#)

[Frequently Asked](#)

COVID-19

Select language: [English ▾](#)



Vaccinate Imperial County

[Find out more about COVID-19 Vaccines](#)



COVID-19 Data

[Track COVID-19 in Imperial County](#)



What's open in Imperial County?

[Find out what's open in Imperial County](#)



Vaccines

Last updated December 21, 2020 at 5:21 PM

COVID-19 vaccination is one of the most important tools to end the COVID-19 pandemic. The State will distribute a safe and effective COVID-19 vaccine fairly to everyone who wants it in all 58 counties of California.



Vaccinate ALL 58

Together we can end the pandemic.

On this page you will find:

- [COVID-19 vaccines are here](#)
- [When can I get vaccinated?](#)
- [How COVID-19 vaccines work](#)
- [Benefits of getting vaccinated](#)
- [Busting myths about vaccination](#)
- [Spread the news about COVID-19 vaccines](#)
- [Questions and answers](#)



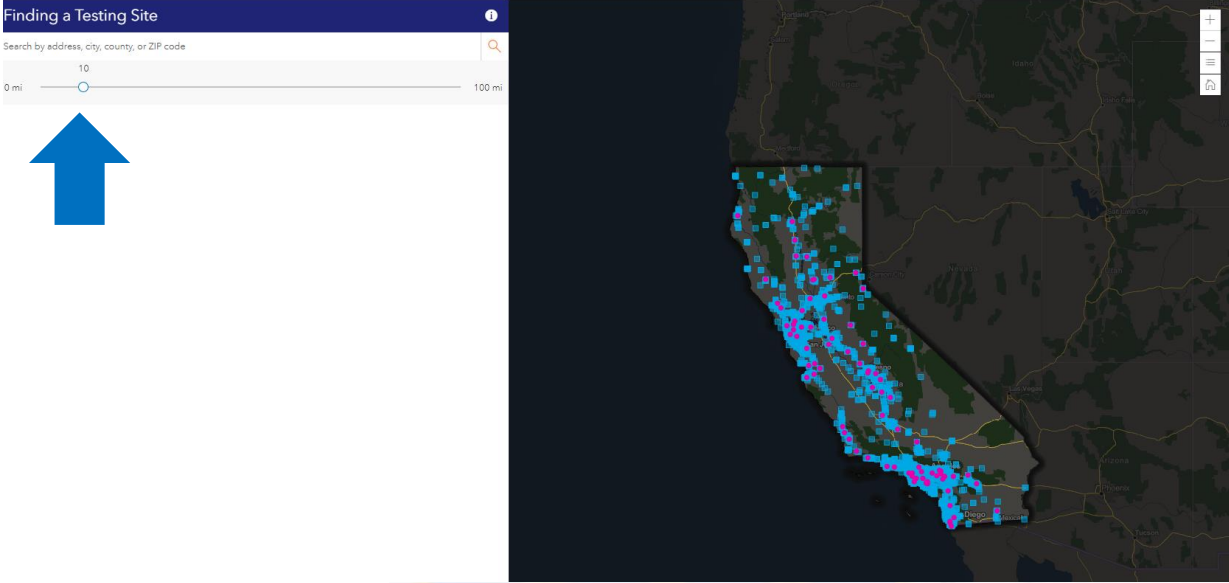
Vaccinate Imperial

Together we can end the pandemic.

Free, confidential COVID-19 testing is available to every Californian that needs it. Appointments are required.

On this page you will find:

- [Testing locations](#)
- [Types of tests](#)
- [Cost for testing](#)
- [Who can get tested](#)
- [How to get tested](#)
- [Questions and answers](#)



Testing locations

State-sponsored testing provided by Verily and OptumServe can be found at the link below.



More testing sites from other providers may be available in your area. Check your [county's COVID-19 website](#).

Types of tests

Two types of COVID-19 tests are available: **Diagnostic tests** and **antibody tests**.



Phases 1b & 1c – pending guidance

<https://covid19.ca.gov/vaccines/>

Phase 1B – HAVEN'T STARTED

1B - TIER 1:

- Those at risk of exposure at work in the following sectors: education, childcare, emergency services, and food and agriculture

1B - TIER 2:

- Those at risk of exposure at work in the following sectors: transportation and logistics; industrial, commercial, residential, and sheltering facilities and services; critical manufacturing
- Congregate settings with outbreak risk: incarcerated and homeless

Phase 1C – HAVEN'T STARTED

- Individuals 50 -64 years of age
- People 16-64 years of age and have an underlying health condition or disability which increases their risk of severe COVID-19
- Those at risk of exposure at work in the following sectors: water and wastewater; defense; energy; chemical and hazardous materials; communications and IT; financial services; government operations /community-based essential functions

Thank you



www.icphd.org