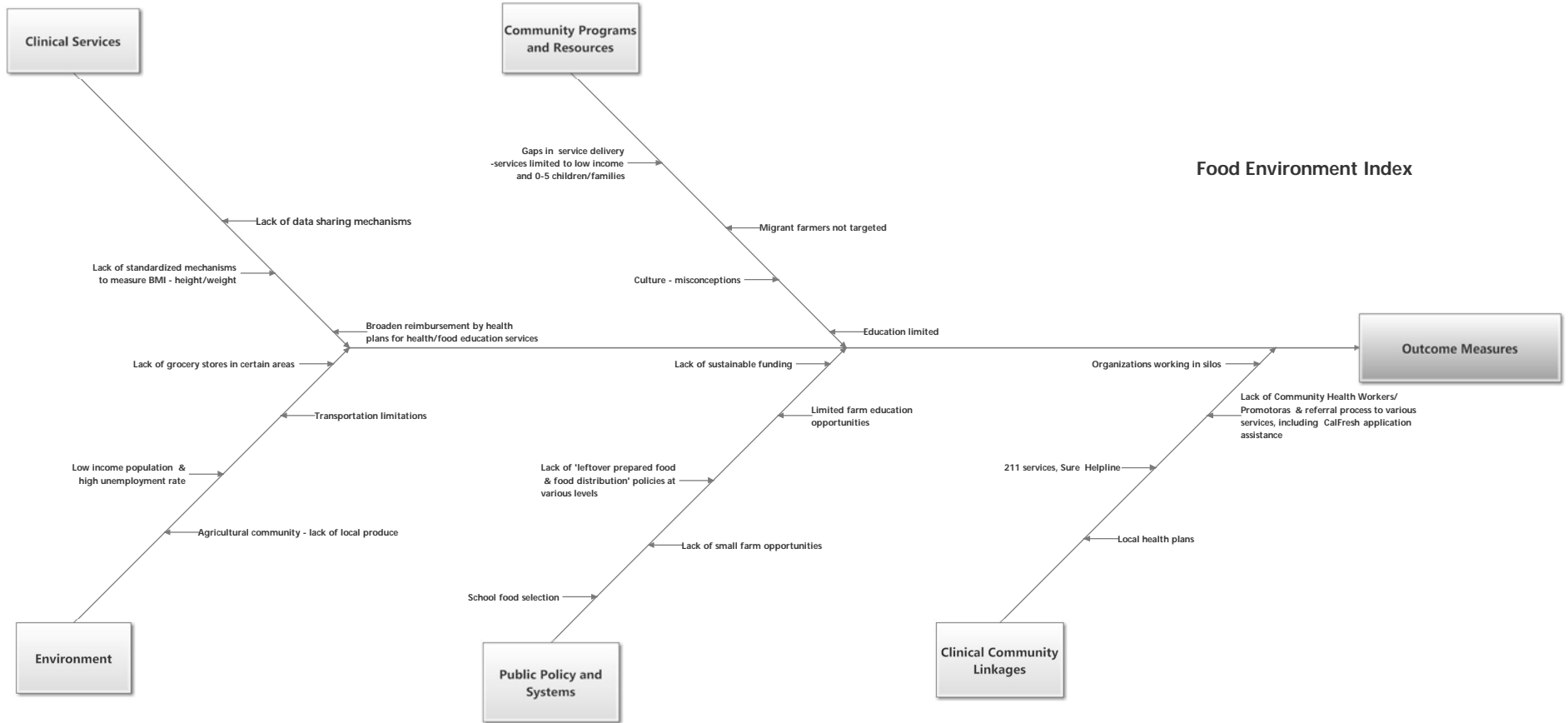

Appendix 7

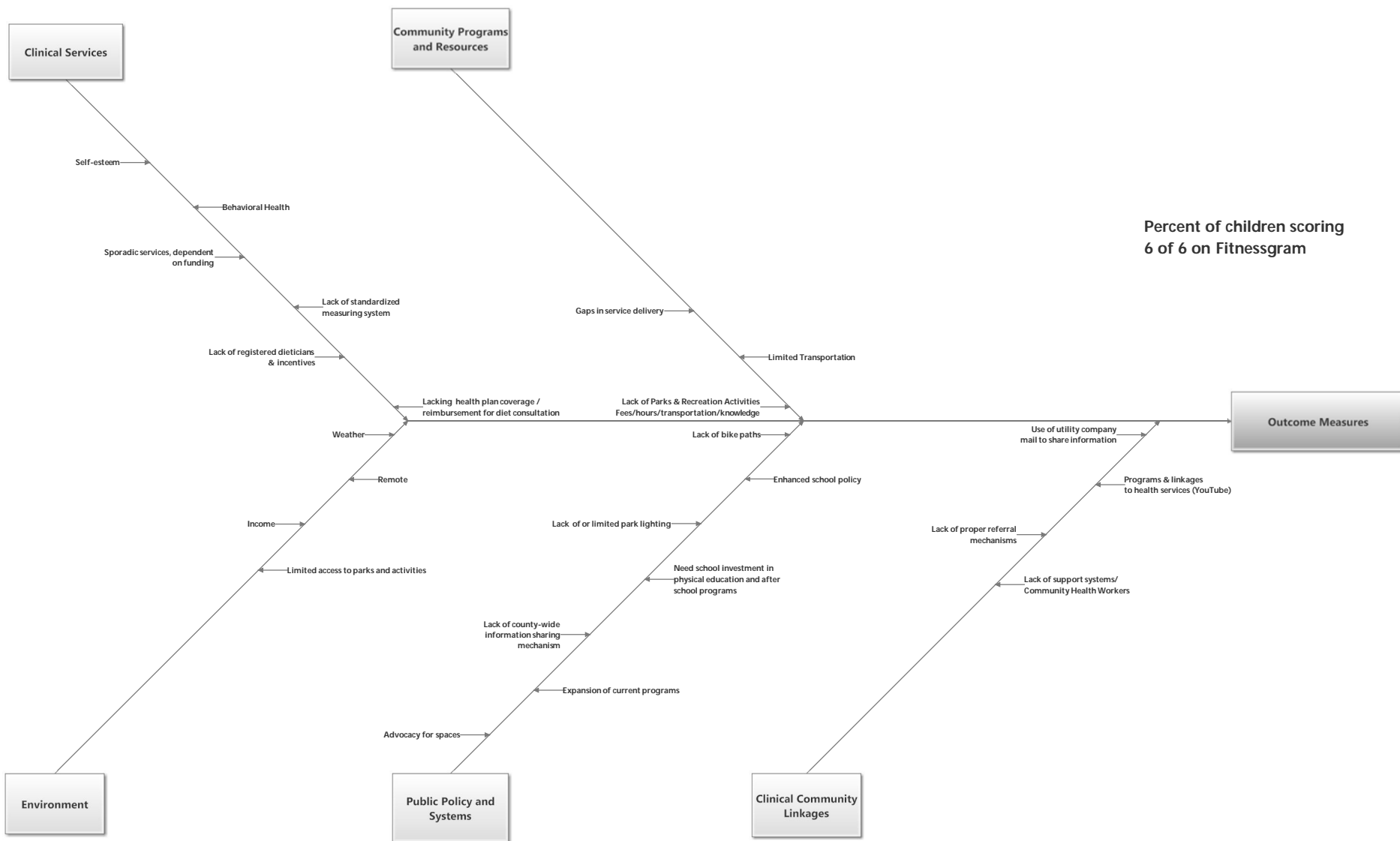
Community Health Improvement Plan Documents

Cause & Effect Diagrams

GOAL 1: Consumption of affordable, accessible, and nutritious foods



GOAL 2: Engagement in affordable and safe opportunities for physical activity



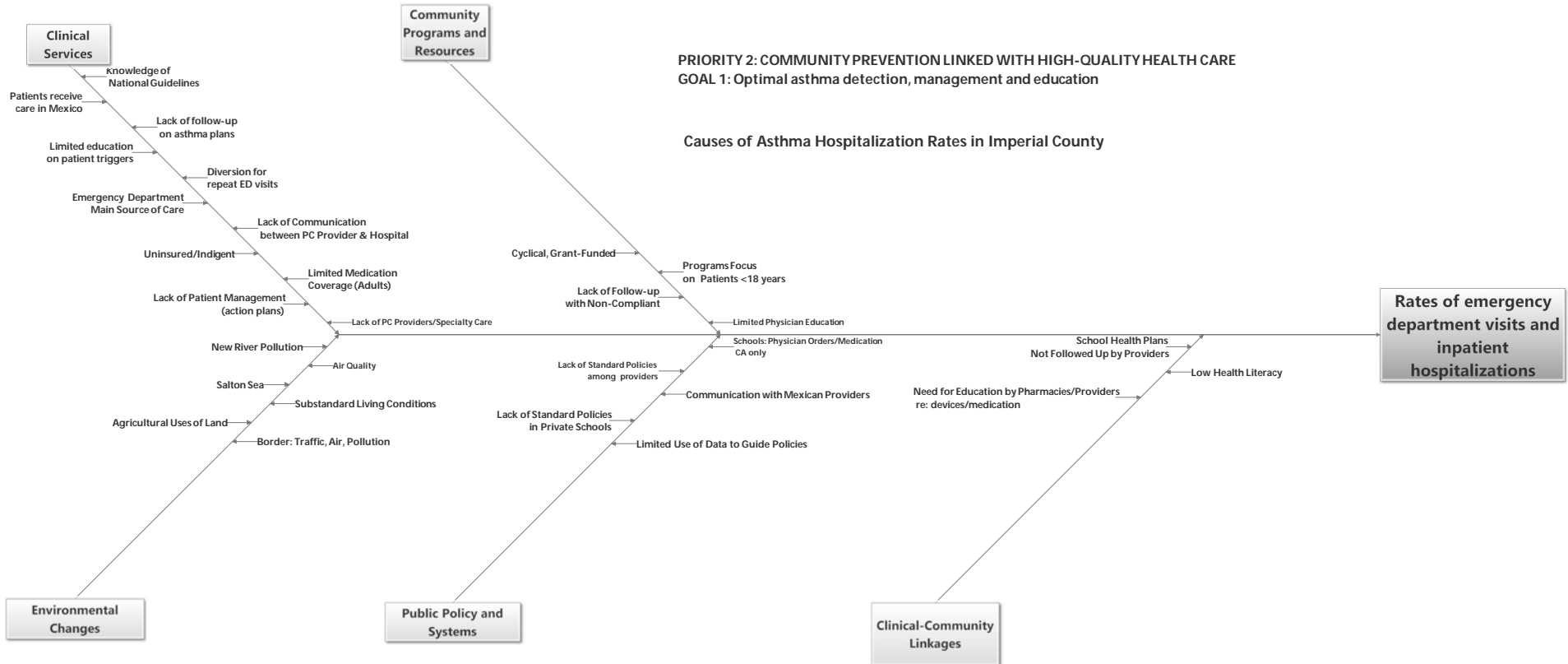
GOAL 3: Achieve and maintain healthy weight

Percent with adults with a Body Mass Index <30

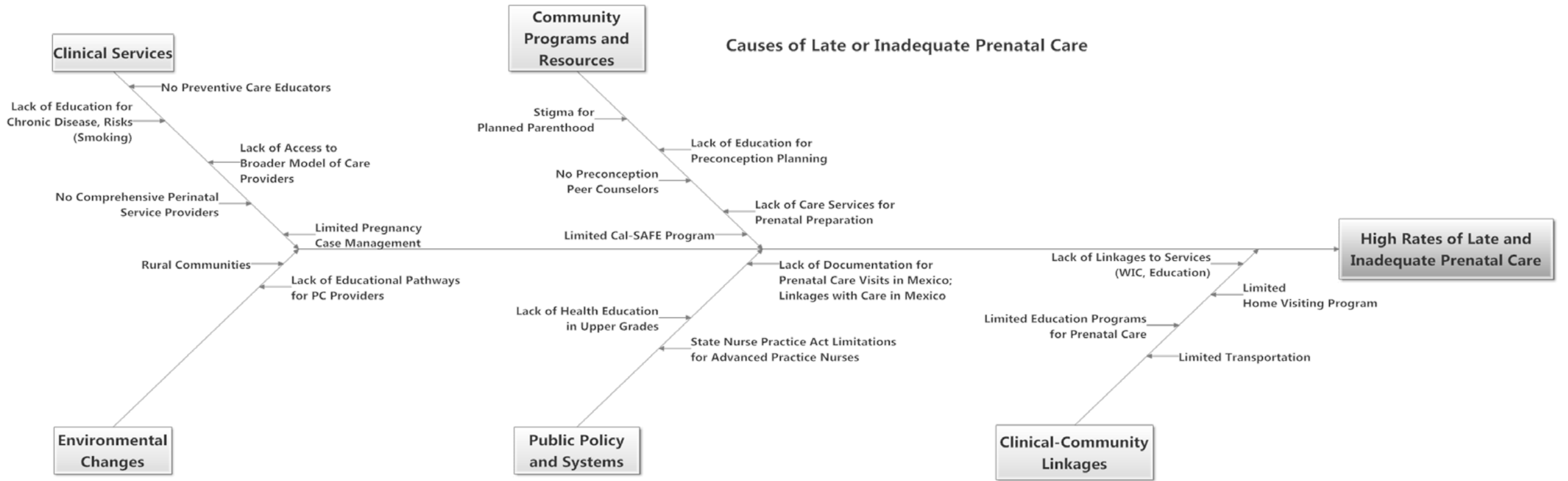


PRIORITY 2: COMMUNITY PREVENTION LINKED WITH HIGH-QUALITY HEALTH CARE
GOAL 1: Optimal asthma detection, management and education

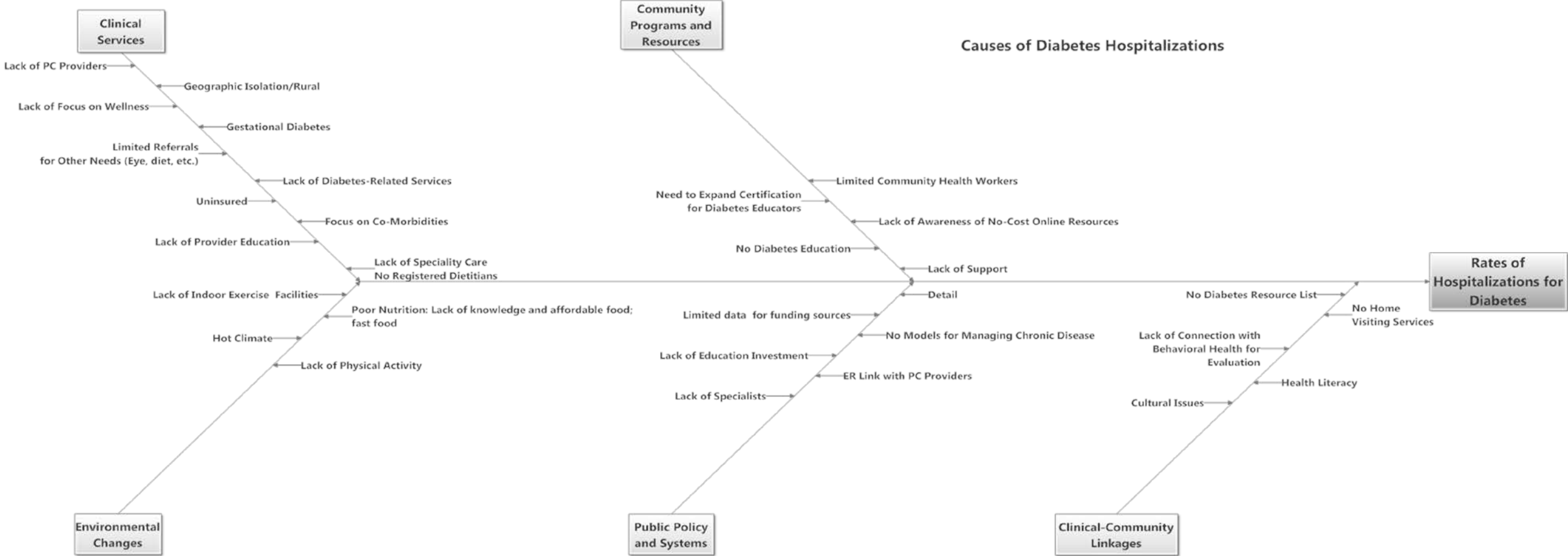
Causes of Asthma Hospitalization Rates in Imperial County



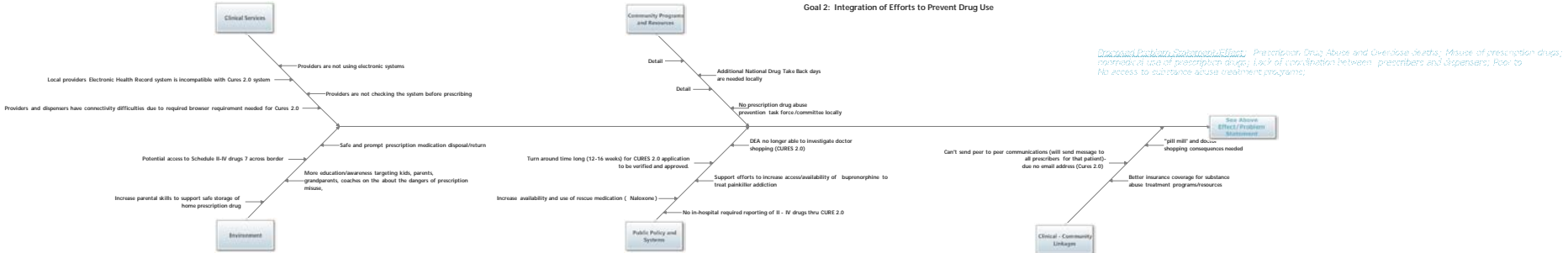
Causes of Late or Inadequate Prenatal Care



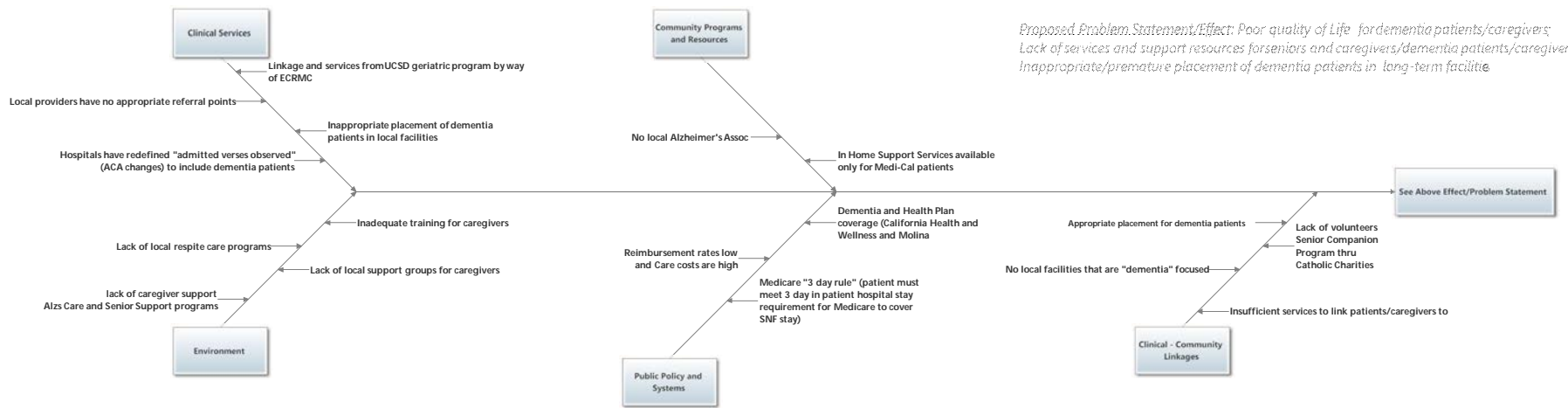
Causes of Diabetes Hospitalizations



Goal 2: Integration of Efforts to Prevent Drug Use



Goal 3: Mobilize Community Efforts to Support and Link Seniors and Caregivers Across Systems



Environmental Scans

**Imperial County Healthy Eating, Active Living Strategies
ENVIRONMENTAL SCAN 2016
DRAFT**

Rev 2/9/16

Strategies/Interventions	Setting(s) and/or Target(s)	Program Name	Lead(s)	End Date	Potential Portfolio Area(s)
Adopt and/or implement wellness policies that create changes to support healthy eating and active living - Supplemental Nutrition Assistance Program (SNAP) - Education (Ed) Program. Focus areas: healthy foods, healthy beverages, physical activity, environmental supports, food security	school districts, child care center, shelters, community organizations, senior congregate site, food distribution sites	USDA-SNAP Ed Local Implementing Agencies (LIA): Nutrition Education and Obesity Prevention	University of California (UC) Davis- Cooperative Extension, Area Agency on Aging, Catholic Charities, Imperial County Public Health Department (ICPHD) (subcontract with Imperial Valley Food Bank)	9/30/2016	Environmental Changes Public Policy & Systems Changes Community Programs & Resources
Increase access and availability of healthier food and beverage options at retail stores. SNAP-Ed Program. Focus areas: healthy foods, healthy beverages, environmental supports, food security.	retail stores	USDA-SNAP Ed LIAs: Nutrition Education and Obesity Prevention	UC Davis- Cooperative Extension, ICPHD (subcontract with Imperial Valley Food Bank)	9/30/16	Environmental Changes Public Policy & Systems Changes Community Programs & Resources
Implement programs and strategies at/by community organizations, schools districts and/or cities to increase access to healthy and safe physical environments - SNAP Ed Program. Focus areas: physical activity, environmental supports.	community organizations, school districts, and/or cities	USDA-SNAP Ed LIAS:	UC Davis- Cooperative Extension, ICPHD (subcontract with IV Food Bank)	9/30/16	Environmental Changes Public Policy & Systems Changes Community Programs & Resources
1. Deliver breastfeeding and nutrition classes. 2. Distribute educational materials. 3. Collaborate with the Imperial County Breastfeeding Coalition. 4. Coordinate outreach activities.	women, infants, children	Women, Infants and Children (WIC) Program	Clinicas de Salud del Pueblo, Inc.	Ongoing	Community Programs & Resources
Coordinate/collaborate in community events such as Nutrition Olympics, Blood Drives, Freedom Fest and Bike to School Day.	various, community-wide	Community Liaison Program	United States Border Patrol	Ongoing	Community Programs & Resources
1. Implement gardens, evidence-based curriculum, and regular cooking and sensory exploration activities at child care sites. 2. Adoption of healthy food or beverage and/or physical activity policy, systems and/or environmental (PSE) changes by child care centers. Focus: healthy foods, healthy beverages, physical activity.	child care centers, children younger than 5 and their families	First Five: Healthy Children, Healthy Lives Project	ICPHD	6/30/17	Environmental Changes Public Policy & Systems Changes Community Programs & Resources
1. Deliver healthy eating, active living educational presentations and community outreach events. 2. Adoption and implementation of healthy foods/beverage, physical activity PSE changes and/or gardening practices by community organizations. Focus: healthy foods, healthy beverages, physical activity.	community organizations, families with children 0-5 years	First Five: Healthy Children, Healthy Lives Project	ICPHD	6/30/17	Environmental Changes Public Policy & Systems Changes Community Programs & Resources
1. Deliver healthy eating and physical activity presentations or workshops that promote optimal development, wellness and healthier lifestyles. 2. Adoption of PSE changes by child care sites. Focus: healthy foods, healthy beverages, physical activity.	child care providers, child care centers	First Five: Healthy Children, Healthy Lives Project	ICPHD	6/30/17	Environmental Changes Public Policy & Systems Changes Community Programs & Resources

1. Strengthen and promote the Imperial County's Childhood Obesity Prevention Alliance as the central community resource that advocates for a healthy lifestyle environment for children and families. 2. Adoption of PSE changes by organizations that will promote and support childhood obesity prevention efforts. Focus: healthy foods, healthy beverages, physical activity.	general community, public/private organizations	First Five: Healthy Children, Healthy Lives Project	ICPHD	6/30/17	Environmental Changes Public Policy & Systems Changes Community Programs & Resources
Food distribution/food assistance services	families in need of food, low income community	Emergency Food Program	IV Food Bank, Catholic Charities, Neighborhood House, other organizations	Ongoing	Community Programs & Resources
CalFresh (formerly known as food stamps) application assistance/services	families in need of food, low income community	CalFresh Outreach Program	Imperial County Department of Social Services	Ongoing	Community Programs & Resources
Distribution of backpacks with food to children for the weekend.	schools, children in need	Weekend Back-up Program	Imperial Valley Food Bank		Community Programs & Resources
Availability of mobile food pantry in Imperial County rural communities	families in need of food, low income community	Mobile Food Pantry	Imperial Valley Food Bank		Community Programs & Resources
"Agency Store" available for partners	community organizations	Shared Maintenance	Imperial Valley Food Bank		Community Programs & Resources
Availability of a monthly box of basic foods for a fee.	families in need of food, low income community	Box of Basics	Imperial Valley Food Bank		Community Programs & Resources
Distribution of USDA commodities to low-income community members through over 40 partner organizations and eligible food pantry sites. Overlaps with food distribution/food assistance services and mobile food pantry.	families in need of food, low income	USDA Commodities	Imperial Valley Food Bank	Ongoing	Community Programs & Resources
Distribution of meals to the homeless during Thanksgiving and Christmas.	homeless	Holiday Meals for the Homeless	Salvation Army		Community Programs & Resources
Distribution of emergency funds to individuals or families in need of food.	families in need of food, low income	Emergency Food Fund	Salvation Army		Community Programs & Resources
Lunch distribution to seniors	seniors	Senior Lunch Program	Salvation Army		Community Programs & Resources
Education for students on natural and renewable sources, including agriculture	schools, youth	Farm Smart Program - Youth	UC Cooperative Extension	09/30/16	Community Programs & Resources
Training for teachers on research, science-based curriculum. Lessons include nutrition and physical activity activities and are designed to supplement teacher's curriculums.	schools, youth	CalFresh Education - Youth	UC Cooperative Extension	9/30/16	Community Programs & Resources
Coalition whose mission is to increase breastfeeding initiation rates by providing breastfeeding education, support and training.	pregnant, breastfeeding mothers and their support systems, organizations	Imperial County Breastfeeding Coalition		Ongoing	Community Programs & Resources
Alliance whose mission is to improve and maintain the health of children and their families through the prevention of obesity & related complications. Focus areas: Leadership, Safe Routes to School, ReThink Your Drink, County Nutrition Action Plan, and Early Care and School Wellness.	families with children 0-5, community in general, organizations	Imperial County Childhood Obesity Prevention Alliance	ICPHD	Ongoing	Environmental Changes Public Policy & Systems Changes Community Programs & Resources
Parks & Recreation (community centers, skate parks, special events, etc.)	Various	Various	Various		Environmental Changes Public Policy & Systems Changes Community Programs & Resources
Schools (Walk to School Days, community fairs, other events)	Students and their families	Various	Various		Public Policy & Systems Changes Community Programs

Imperial County Community Prevention Linked with High-Quality Health Care Priority 2 ENVIRONMENTAL SCAN - Early and Adequate Prenatal Care

Strategies/Interventions	Setting(s) and/or Target(s)	Program Name	Lead(s)	Target/End Date	Potential Portfolio Area(s)
Increase the number of providers in Comprehensive Perinatal Services Program (CPSP); identify local providers who have capacity to be CPSP providers; develop and implement a survey that assesses local provider interest, barriers, etc., regarding the possibility of becoming a CPSP provider; develop a training plan that addresses findings from survey data to maximize interest and commitment by local providers to become a CPSP provider; develop a system to track the number of women accessing CPSP providers.	health-care providers	Comprehensive Perinatal Services Program (CPSP)	Imperial County Public Health Department - Maternal, Child and Adolescent Health Program	June 2019	Clinical Services
Participate in and/or provide technical assistance in the development of a joint CQI/QA process with Medi-Cal Managed Care (MCMC) plans and providers to improve the quality of comprehensive perinatal services in the MCMC plans.	Medi-Cal Managed Care plans; providers	Comprehensive Perinatal Services	Imperial County Public Health Department - Maternal, Child and Adolescent Health Program, in collaboration with California Health and Wellness; Molina	June 2018	Clinical Services Community Programs & Resources
The Imperial County Home Visiting Program (ICHVP) assists families of newborns to get children off to a healthy start. Professionally trained Home Visitors will provide educational information and engaging activities through a caring and individualized approach so that you can provide the best for your new baby. Services are available at no cost to you.	Families residing in Brawley, Calexico, El Centro, Heber, Holtville, Imperial, and Seeley and are pregnant, or who have a newborn baby less than 2 weeks of age	Imperial County Home Visiting Program	Imperial County Public Health Department - Maternal, Child and Adolescent Health Program, in collaboration with Healthy Families America	Annual renewal	Community Programs & Resources
Women who access ICPHD Maternal Child Adolescent Health services will be linked to partner agencies (i.e., March of Dimes, Clinicas Children and Families First Commission, WIC, and others) to obtain information and resources on prenatal care, preconception health, and/or other appropriate resources	Women of child-bearing age		Imperial County Public Health Department - Maternal, Child and Adolescent Health Program	June 2016	Clinical-Community Linkages Community Programs & Resources
Develop and implement a social media plan (Facebook page, messaging points, links, group discussion options) that targets pregnant women aiming to increase awareness and access to prenatal care.	Women of child-bearing age		Imperial County Public Health Department - Maternal, Child and Adolescent Health Program	June 2020	Public Policy & Systems Changes
Project aimed at reducing preterm birth by providing: 1. bilingual curriculum for pregnant women to learn about having a healthy pregnancy and healthy baby 2. community education and awareness events on topics such as preconception/interconception; the importance of early and adequate prenatal care; prematurity awareness, including the signs and symptoms of preterm labor, 3. Provide professional education opportunities to reach professionals with current perinatal information and practices 4. Multi-media campaign	Women of Child-bearing age; health-care providers	Healthy Babies are Worth the Wait Project	March of Dimes chapter, Public Health Department, clinic/hospital, universities and colleges, and the community	June 2016	Community Programs & Resources; Clinical Services
"Go Before You Show™" (GBYS) multi-media campaign to increase the general public's awareness the importance of early entry into prenatal care (in development)	Women of child-bearing age	Go Before You Show (GBYS)	March of Dimes	June 2016	Community Programs & Resources; Clinical-Community Linkages
Bilingual curriculum designed for pregnant women to learn about having a healthy pregnancy and healthy baby in a supportive group setting; topics include: prenatal care; Nutrition; stress; things to avoid during pregnancy; labor and birth; postpartum and newborn care	Women of child-bearing age	Becoming A Mom/Comenzando Bien	March of Dimes	June 2016	Community Programs & Resources; Clinical-Community Linkages
Provider/patient education on preconception health: comprehensive preconception health promotion website with information for consumers and resources for health-care professionals	Women of Child-bearing age; health-care providers	Every Woman, Every Time	March of Dimes	June 2016	Clinical-Community Linkages
Three certified Nurse Midwives will provide in-depth prenatal education and services in an OB-GYN clinic in the rural health center clinic next to hospital (accepting all insurance including Medi-Cal)	Women of Child-bearing age		Pioneers Memorial Hospital	Ongoing	Clinical Services
Transportation assistance program to allow Calexico patients to travel to appointments at PMH and clinics	Women of Child-bearing age		Pioneers Memorial Hospital	Ongoing	Clinical-Community Linkages
Update policies on prenatal care; Care teams: MD/PA/NP + MA + Educator + care coordinator/case manager + multifunction clerks + referral center + pharmacy + IT/data analyst; systematic care team training on policies and national guidelines; customized electronic health record that offers clinicians tools for care such as care guidelines, care or action plans, disease management templates, educational handouts; standardized referral mechanisms for specialty care; follow national guidelines (NAEPP, NHLBI, ADA, ACOG)	clinic; patients	Chronic Care Model & patient-centered medical home model	Clinicas de Salud del Pueblo, Inc.	Ongoing	Public Policy & Systems Changes; Clinical Services
Pay for performance and incentives for meaningful use or meeting Hedis measures	clinic	Health plans/Medi-Cal under managed care	Clinicas de Salud del Pueblo, Inc.	Ongoing	Public Policy & Systems Changes
Home visits for patients with more than 3 visits to ED within 3 months; Connect with nurse case-manager at CA Health & Wellness, make	Medi-Cal patients	Emergency Dept. Divergence	Clinicas de Salud del Pueblo, Inc.; California Health &	Ongoing	Clinical-Community Linkages; Community

<p>Case manager or clinician or pharmacist make clinic appointments, problem-solve barriers to care</p>	<p>Medi-Cal patients</p>	<p>Divergence Program</p>	<p>Inc.; California Health & Wellness</p>	<p>Ongoing</p>	<p>Community Programs & Resources</p>
<p>View the Emergency Department record of treatment for a specific patient for follow up</p>	<p>Health-care providers</p>		<p>Pioneers Memorial Hospital</p>	<p>Ongoing</p>	<p>Clinical Services</p>

Imperial County Community Prevention Linked with High-Quality Health Care Priority 2 ENVIRONMENTAL SCAN - Diabetes

Strategies/Interventions	Setting(s) and/or Target(s)	Program Name	Lead(s)	End Date	Potential Portfolio Area(s)
Certified diabetes educator: receives referral from health-care providers for one-on-one patient education	patients with diabetes	Outpatient diabetes education	Pioneers Memorial Hospital; El Centro Regional Medical Center		Clinical-Community Linkages
Update policies on diabetes (and other chronic conditions); Care teams: MD/PA/NP + MA + Educator+care coordinator/case manager + multifunction clerks + referral center + pharmacy + IT/data analyst; systematic care team training on policies and national guidelines; customized electronic health record that offers clinicians tools for care such as care guidelines, care or action plans, disease management templates, educational handouts; standardized referral mechanisms for specialty care; follow national guidelines (NAEPP, NHLBI, ADA, ACOG)	clinic; patients	Chronic Care Model & patient-centered medical home model	Clinicas de Salud del Pueblo, Inc.	Ongoing	Public Policy & Systems Changes; Clinical Services
Pay for performance and incentives for meaningful use or meeting Hedis measures	clinic	Health plans/Medi-Cal under managed care	Clinicas de Salud del Pueblo, Inc.	Ongoing	Public Policy & Systems Changes
Home visits for patients with more than 3 visits to ED within 3 months; Connect with nurse case-manager at CA Health & Wellness, make clinic appointments, problem-solve barriers to care	Medi-Cal patients	Emergency Dept. Divergence Program	Clinicas de Salud del Pueblo, Inc.; California Health & Wellness	Ongoing	Clinical-Community Linkages; Community Programs & Resources
Home visits for patients with serious health issues such as diabetes; use evidence-based curricula for conducting home visits; make clinic appointments, problem-solve barriers to care	patients	Health Education at Home Program	Clinicas de Salud del Pueblo, Inc.	Ongoing	Clinical-Community Linkages; Community Programs & Resources
7 question test (bilingual) that individuals can answer to see if they are at a higher risk for type 2 diabetes; if individuals receive a score of 5+ then they should seek a health-care provider to receive a diagnosis. The risk test can also be accessed via internet at diabetes.org/socalalert or dolhaveprediabetes.org and, also, via mobile phone and people can text RISKTEST or EXAMEN to 97779 (for English and Spanish, respectively).	countywide; individuals	Diabetes Risk Test	American Diabetes Association	Ongoing	Community Programs & Resources
Educational materials sent via mail or email with information in English or Spanish. Individuals or providers can sign people up at diabetes.org/living or diabetes.org/viviendo (English and Spanish, respectively). Free text messaging program with motivational texts to help individuals manage or prevent diabetes.	countywide; individuals; health-care providers	Living with Type 2 (Diabetes)	American Diabetes Association	Ongoing	Clinical-Community Linkages Community Programs & Resources
View the Emergency Department record of treatment for a specific patient for follow up	Health-care providers		Pioneers Memorial Hospital	Ongoing	Clinical Services

Imperial County Community Prevention Linked with High-Quality Health Care

Priority 2 ENVIRONMENTAL SCAN - Asthma

Strategies/Interventions	Setting(s) and/or Target(s)	Program Name	Lead(s)	End Date	Potential Portfolio Area(s)
Community Based-asthma program that focuses on preventing or reducing emergency room visits and hospitalizations by enhancing parental asthma management skills, asthma trigger reduction avoidance through education, home visitation, as well as the promotion of the adoption of the asthma guidelines by local Medical providers; works with both hospitals in implementing system change; offers provider education & presentations to school nurses and day care center providers; host various community events	asthma patients, caregivers, health-care providers	Imperial Valley Child Asthma Project (IVCAP)	El Centro Regional Medical Center, in partnership with Pioneers Memorial Hospital	Ongoing	Clinical-Community Linkages; Community Programs & Resources; Public Policy & Systems Change
1. Environmental assessments in the home and follow-up/advocacy with landlords and government entities; 2. environmental health and environmental promotion in disadvantaged and underserved communities; 3. education to families of children with asthma to recognize and avoid asthma triggers; 4. increase community awareness of indoor and outdoor asthma triggers; 5. provide training for Community Health Workers to identify indoor triggers	Asthma patients and Caregivers; physicians; residents; community health workers	Healthy Homes Healthy Breathing Project	Imperial Valley Child Asthma Project (IVCAP) El Centro Regional Medical Center	February 2016	Environmental Changes Community Programs & Resources
1. Community Health Workers serve as liaison between families/caregivers and low-income housing managers to advocate for safe and healthy housing; 2. conduct forums to increase awareness among families/caregivers; 3. training for maintenance workers for low-income housing in collaboration with Housing Authority managers and the National Center for Healthy Housing	families/caregivers, landlords & maintenance workers in low-income housing in Brawley, El Centro and Calexico	Environmental Health and Asthma Awareness in Low-Income housing communities of Imperial County	Imperial Valley Child Asthma Project (IVCAP) El Centro Regional Medical Center	Ongoing	Environmental Changes Community Programs & Resources
Work with local hospitals in identifying current policies adopted or currently working on to improve the services provided to asthmatics that seek services at the facilities (ER and inpatients setting) ECRMC- is working on the development and adaptation of an ER protocol (Champion- Dr. De la Rosa and Cardio Department). ECRMC Pediatric Department developed a F.L.A.R.E which is an Asthma Plan used by acute-care facilities to guide patients on asthma care after discharged from the hospital. Focus: Improve consistency of patients receiving asthma discharge instructions from ER's and Inpatient Settings of Both hospitals. Improve health-care practitioner notification regarding asthma care received by their patients in the ER and Inpatient setting.	hospitals; providers		Imperial Valley Child Asthma Project (IVCAP) El Centro Regional Medical Center	Ongoing	Public Policy & Systems Changes
Asthma home visits for 200 youth ages 6-17	asthmatic youth ages 6-17	Respira Sano	Comite Civico del Valle, Inc.	12/31/16	Community Programs & Resources
Air Quality Monitoring at 10 schools countywide with flags to reduce exposure when air quality is poor; increased awareness and training for teachers and students; outreach to parents	school personnel, teachers, students, parents		Comite Civico del Valle, Inc.		Community Programs & Resources; Environment
Air monitoring; locate 40 air sensors to measure community level air quality and pollution hot spots	countywide		Comite Civico del Valle, Inc.		Community Programs & Resources; Environment
Environmental Monitoring System to report and eliminate hazards, including air quality issues; enforcement of regulations	countywide	Identifying Violations Affecting Neighborhoods (IVAN)	Comite Civico del Valle, Inc.	Ongoing	Environment Public Policy & System Changes
Legislation: AB 1079 -- California-Mexico Border Relations Council to develop a strategic plan containing specific elements to guide the implementation of the New River Improvement Project. The bill would authorize the council to appoint, convene, and oversee a technical advisory committee that would advise the council regarding the necessary studies and activities to carry out the project	New River; Calexico; surrounding communities	New River Improvement Project	Calexico New River Committee		Environment; Public Policy & System Changes
Update policies on asthma (and other conditions); Care teams: MD/PA/NP + MA + Educator+care coordinator/case manager + multifunction clerks + referral center + pharmacy + IT/data analyst; systematic care team training on policies and national guidelines; customized electronic health record that offers clinicians tools for care such as care guidelines, care or action plans, disease management templates, educational handouts; standardized referral mechanisms for specialty care; follow national guidelines (NAEPP' NHLBI, ADA, ACOG)	clinic; patients	Chronic Care Model & patient-centered medical home model	Clinicas de Salud del Pueblo, Inc.	Ongoing	Public Policy & Systems Changes; Clinical Services
Pay for performance and incentives for meaningful use or meeting Hedis measures	clinic	Health plans/Medi-Cal under managed care	Clinicas de Salud del Pueblo, Inc.	Ongoing	Public Policy & Systems Changes
Home visits for patients with more than 3 visits to ED within 3 months; Connect with nurse case-manager at CA Health & Wellness, make clinic appointments, problem-solve barriers to care	Medi-Cal patients	Emergency Dept. Divergence Program	Clinicas de Salud del Pueblo, Inc.; California Health & Wellness	Ongoing	Clinical-Community Linkages; Community Programs & Resources
Home visits for patients with serious health issues such as asthma; use evidence-based curricula for conducting home visits; make clinic appointments, problem-solve barriers to care	Asthma patients	Health Education at Home Program	Clinicas de Salud del Pueblo, Inc.	Ongoing	Clinical-Community Linkages; Community Programs & Resources
Website to provide current conditions of air quality in Imperial County. Data are collected from monitoring stations in Calexico, El Centro' Brawley' Westmorland, and Niland. The information is reported using an Air Quality Index, an indicator developed by the U.S. Environmental Protection Agency to report air quality and to help the public understand what it means for their health	Countywide	Air Quality Index	California Air Resources Board, in cooperation with the Imperial Valley Air Pollution Control District and the U.S. Environmental Protection Agency	Ongoing	Environment; Public Policy & Systems Change; Community Programs & Resources
View the Emergency Department record of treatment for a specific patient for follow up	Health-care providers		Pioneers Memorial Hospital	Ongoing	Clinical Services

**Imperial County
ENVIRONMENTAL SCAN 2016
Priority 3 Goal 1: Air Quality**

Strategies/Interventions	Setting(s) and/or Target(s)	Program Name	Lead(s)	End Date	Potential Portfolio Area(s)
<p>Border 2020 Task Force. Task Force meets quarterly, alternating between Imperial County and Mexicali. Focuses on accomplishing objectives under Goal 1: Reduce Air Pollution of the Border 2020 Program. Objective 1: by 2020 in accordance with NAFTA, promote the reduction of the number of vehicles operating in the border region that do not comply with the respective vehicle emissions standards, and reduce vehicle emissions at ports-of-entry through anti-idling and other feasible reduction measures; Objective 2 By 2020, reduce pollutant emissions in order to approach attainment of respective national ambient air quality standards in the following airsheds Imperial County Mexicali, and San Diego/Tijuana; Objective 3 By 2018, maintain effective air monitoring networks and provide real-time access to air quality data in California/Baja California; Objective 4 [...] Objective 5 By 2020, reduce emissions and associated impacts through energy efficiency and/or alternative/renewable energy projects.</p>	U.S. Mexico Border	Border 2020 - Imperial Valley-Mexicali Air Quality Task Force	EPA (task force contacts Dave Fege (SD) and Belen Leon, Air Pollution Control District	2020	Community Programs and Resources
<p>The Imperial Valley Air Quality website. This website was developed by California Air Resources Board in cooperation with the Imperial County Air Pollution Control District. The California Air Resources Board, in cooperation with the Imperial Valley Air Pollution Control District and the U.S. Environmental Protection Agency, has set up a web site to provide current conditions of air quality in the Imperial Valley. Data are collected from monitoring stations in Calexico, El Centro, Brawley, Westmorland, and Niland. The information is reported using an Air Quality Index (AQI). The AQI is an indicator developed by the U.S. Environmental Protection Agency to report air quality and to help the public understand what it means for their health.</p> <p>The AQI uses a scale from 0 to 500. The higher the AQI value is, the greater the level of pollution and the greater the health concern. An AQI value of 100 generally corresponds to the national ambient air quality standard set for each pollutant to protect public health. AQI values below 100 are generally considered to be satisfactory, and values above 100 represent unhealthy air pollution levels — at first for members of sensitive populations, then for everyone as AQI values go above 150.</p> <p>Interested individuals can sign up to be notified when air quality in the Imperial Valley reaches unhealthy levels. This service is free, and notifications can be made via e-mail, text pager, or digital cellular phone. To register to receive air quality alerts, go to: http://www.imperialvalleyair.org/airalert.cfm</p>	Calexico, El Centro, Brawley, Westmorland, and Niland	The Imperial Valley Air Quality website (A web-based air quality and health information center)	The California Air Resources Board, in cooperation with the Imperial Valley Air Pollution Control District and the U.S. Environmental Protection Agency	Ongoing	Community Programs and Resources
<p>Air Now website: Map and forecast data are collected using federal reference or equivalent monitoring techniques or techniques approved by the state, local or tribal monitoring agencies. To maintain "real-time" maps, the data are displayed after the end of each hour. Although preliminary data quality assessments are performed, the data in AirNow are not fully verified and validated through the quality assurance procedures monitoring organizations used to officially submit and certify data on the EPA Air Quality System (AQS).</p> <p>This data sharing and centralization creates a one-stop source for real-time and forecast air quality data. The benefits include quality control, national reporting consistency, access to automated mapping methods, and data distribution to the public and other data systems.</p> <p>The U.S. Environmental Protection Agency, National Oceanic and Atmospheric Administration, National Park Service, tribal, state, and local agencies developed the AirNow system to provide the public with easy access to national air quality information. State and local agencies report the air quality index (AQI) for cities across the US and parts of Canada and Mexico.</p> <p>AirNow data are used only to report the AQI, not to formulate or support regulation, guidance or any other EPA decision or position.</p>	Imperial Valley	Air Now website	The U.S. Environmental Protection Agency, National Oceanic and Atmospheric Administration, National Park Service, tribal, state, and local agencies developed the AirNow system	Ongoing	Community Programs and Resources

Imperial County 2013 State Implementation Plan:	Imperial County area - El Centro, Calexico, and Brawley	Imperial County 2013 State Implementation Plan For The 2006 24-Hour PM 2.5 Moderate Nonattainment Area	Imperial County Air Pollution Control District and the California Air Resources Board		Environment
Salton Sea Mitigation Plan: \$3 billion plan to cover pilot projects designed to cover parts of the exposed lakebed with small pools to suppress dust and provide habitats for fish/birds. Also, geothermal energy development to help fund larger-scale mitigation projects.	Salton Sea Basin, and surrounding areas.	Salton Sea Mitigation Plan	Imperial Irrigation District and Imperial County		Public Policy and Systems Change
Salton Sea Restoration and Renewable Energy Initiative: thousands of additional acres of habitat projects atop exposed Salton Sea lakebed, combined with dust management projects in more remote areas, and expanded access to geothermal projects.	Salton Sea Basin, and surrounding areas.	Salton Sea Restoration and Renewable Energy Initiative	Imperial Irrigation District		Public Policy and Systems Change
Flag Alert Program: The Flag Program for Imperial County Schools (elementary through high school). Developed in order to alert administrators, staff, students, parents and community of daily particulate level risks. A visual communication device utilizing colored flags based on air quality index colors; Flag color indicates the level of recommended outdoor activity for the day; alert notifications will be received via e-mail, text or cell phone when the air quality in the Imperial County reaches unhealthy levels; once school official/volunteer logs on the website, real time air quality index (AQI) levels are available; identified individual will raise appropriate colored flag that corresponds to the real time AQI	Imperial County Schools - elementary through high school	Flag Alert Program	Imperial County Air Pollution Control District		Environment
Mexicali and Imperial County Educational Media Campaign: Community education and awareness on the management and prevention of burning - development of a "no burn" radio and television Environmental Education Media Campaign to help inform Mexicali community concerning the impacts from the open burning upon our air quality - dominant element of the campaign is the media slogan "Because the future is in your hands".	Imperial and Mexicali Valleys	Mexicali and Imperial County Educational Media Campaign	Imperial County Air Pollution Control District and Mexicali Mexico		Environment
Vehicle Idling Emissions Study at Calexico East and Calexico West Ports of Entry: Study with two main elements; a) determine the vehicle idling impacts at both parts of entry, and b) identification of emission reduction strategies that U.S.-Mexican planning agencies can implement at both ports of entry in order to reduce impact on general population.	Imperial and Mexicali Valleys	Vehicle Idling Emission Study	Imperial County Air Pollution Control District, and an out-of-area consulting agency		Environment

**Imperial County
ENVIRONMENTAL SCAN 2016**

Priority 3 Goal 2: Prescription Drug Abuse Prevention

Strategies/Interventions	Setting(s) and/or Target(s)	Program Name	Lead(s)	End Date	Potential Portfolio Area(s)
<p>National Take Back Day (2 times a year): DEA, law enforcement and community partners give the public opportunities to prevent pill abuse and theft by ridding their homes of potentially dangerous expired, unused, and unwanted prescription drugs. The Imperial County locations are as follows: Food 4 Less, 109 W. Birch Street, Calexico, CA; Vons, 750 N. Imperial Avenue, El Centro, CA; and Vons' 475 W. Main Street, Brawley, CA. The service is free and anonymous, no questions asked. The National Prescription Drug Take-Back Day addresses vital public safety and health issues. Many Americans are not aware that medicines that languish in home cabinets are highly susceptible to diversion, misuse, and abuse. Rates of prescription drug abuse in the U.S. are alarmingly high, as are the number of accidental poisonings and overdoses due to these drugs. Studies show that many abused prescription drugs are obtained from family and friends, including from the home medicine cabinet. In addition, many Americans do not know how to properly dispose of their unused medications, often flushing them down the toilet or throwing them away – posing safety and environmental hazards. Take Back Day for 2016 is pending.</p>	Imperial Valley	National Take Back Day	DEA/DOJ	On going	Community
<p>CURES 2.0 System - (Controlled Substance Utilization Review and Evaluation System) is a database of Schedule II, III and IV controlled substance prescriptions dispensed in California serving the public health, regulatory oversight agencies, and law enforcement. CURES 2.0 is committed to the reduction of prescription drug abuse and diversion without affecting legitimate medical practice or patient care.</p> <p>The Health Insurance Portability and Accountability Act of 1996 (HIPAA) and confidentiality and disclosure provisions of California law cover the information contained in CURES 2.0.</p> <p>Access to CURES 2.0 is limited to licensed prescribers and licensed pharmacists strictly for patients in their direct care; and regulatory board staff and law enforcement personnel for official oversight or investigatory purposes.</p>	local prescribers and dispensers	Cures 2.0	DEA/DOJ		
<p>PMH - Diversion Prevention Committee: Oversees diversion prevention, detection and response activities of the institution; facilitates the development of policies, procedures and standard operating procedures, and ensures these are kept current; analyzes and tracks data regarding diversion events; devises and implements educational programs for staff; may perform a root cause analysis following each diversion event and direct changes that are warranted. Committee may include, Pharmacy, nursing, anesthesia, security</p> <ul style="list-style-type: none"> • Risk Management, Chief Medical Officer, compliance, human resources, employee health, infection prevention, laboratory services, other ad hoc members (such as environmental services) 	PMH clients	PMH Diversion Prevention Committee	PMH	On going	
<p>Alcohol and Drug Coalition: prevention updates (Strategic Prevention Plan) and the Strategic Framework Prevention Plan goals are to reduce marijuana use in Imperial County, decrease access to alcohol among underage persons, and promote community awareness to decrease the use of alcohol and other drugs.</p> <p>Information Dissemination: Increases knowledge and provides community awareness of available prevention programs and services. Educate the communities about specific substance abuse and health-related risks, and other activities to promote positive and healthy lifestyles. Examples are presentations at conferences, booths or tables set up to display informational materials.</p> <p>Education Strategy: This is where we go out to the schools sites primarily focusing on 9th and 11th grades using the Too Good for Drugs evidenced based curriculum. We also conduct drug and alcohol educational presentations throughout the course of the year to bring awareness to the community/schools/agencies.</p> <p>Environmental Strategy: This strategy focuses places and specific problems, with an emphasis on public policy. I mentioned last week that four (4) local high schools are participating in a media clip focusing on Healthy Lifestyles and the winning school media clip will be airing at I.V. mall and Calexico 10 Theater.</p>			ICBHS Youth and Young Adults, Alcohol and Drug Prevention		
<p>The Drug Medi-Cal Organized Delivery System (DMC ODS): a pilot program to test a new model for the organized delivery of health care services for Medicaid eligible individuals with a Substance Use Disorder. The waiver will make improvements to the Drug Medi-Cal service delivery system by focusing on critical elements..example: increase coordination with other systems of care including physical and mental health.</p>			ICBHS Youth and Young Adults, Alcohol and Drug Prevention		

**Imperial County
ENVIRONMENTAL SCAN 2016**
Priority Area 1 Mobilizing Community Efforts to Support & Link Seniors & Caregivers Across Systems

	Setting(s) and/or Target(s)	Program Name	Lead(s)	End Date	Potential Portfolio Area(s)
Adult Protective Services: Investigates abuse or neglect and provides limited case management through the coordination of referrals	Seniors	IC Department of Social Services	IC Department of Social Services	On-going	Clinical Setting
In-Home Supportive Services (IHHS) Program: Provides help in the home to help seniors remain independent and safe in their own home. Available to Medi-Cal eligible individuals only. (?)	Seniors	IC Department of Social Services	IC Department of Social Services	On-going	Clinical Community Linkages
IHHS Public Authority: Responsible for a provider registry to assist IHSS recipients findings providers, provides access to trainings for provider and recipients and performs other functions related to IHSS	Seniors	IC Department of Social Services	IC Department of Social Services	On-going	Clinical Community Linkages
Respite Care: Services provide companionship, supervision, stimulating activities, assistance with meals, prompting and cueing, and giving caregivers a break. Elderly/Disabled: Assist frail elderly/functionally impaired adults in their homes by providing care, supervision, companionship, and activities while their caregiver gets a break. The goal is to prevent or delay institutionalization of either the person being cared for or the caregiver themselves. Caregivers: Assist caregivers by helping frail elderly/disabled adult in their home, which allows caregivers to have some free time, take care of other responsibilities, and obtain (often much-needed) mental breaks.	Elderly, Disabled Adults, and Caregivers	IC Area Agency on Aging	IC Area Agency on Aging	On-going	Community Programs and Resources
Targeted Case Management: Case management services ensure that the changing needs of the Medi-Cal eligible persons are addressed on an ongoing basis and appropriate choices are provided among the array of options to meet needs. Service components: documented assessment, development of written, comprehensive, individualized service plan, linkage/consultation, assistance with service access, crisis assistance planning and periodic review.	Seniors	IC Area Agency on Aging	IC Area Agency on Aging	On-going	Clinical-Community Linkages
Legal Assistance: legal advice, and/or representation by an attorney or other person acting under the supervision of an attorney	Seniors	IC Area Agency on Aging	IC Area Agency on Aging	On-going	Community Programs and Resources
Home Delivered Meals: meal provided to eligible individual in his/her place of residence, that meets all requirements of the Older Americans Act and State/Local laws, assures one-third of the current Dietary Reference Intake and complies with Dietary Guidelines for Americans.	Brawley Calixico Calipatria, El Centro Heber Holtville Imperial Niland Ocotillo, Salton Sea, Seeley Westmorland West Shores	IC Area Agency on Aging	IC Area Agency on Aging	On-going	Community Programs and Resources
Congregate Meals: A meal provided to eligible individual in a congregated group setting that meets all of the requirements of the Older Americans Act and State/Local laws, assures one-third of the current Dietary Reference Intake. <i>Reservations are required.</i> Lunch is served from 11:30-12 noon.	a. El Centro Desert Villa Apts., M-F b. El Centro Community Center M-F c. Brawley Senior Center M-F d. Calixico Community Center M-F e. West Shores Assembly of God Thursday only f. Westmorland Senior Center Thursday only g. IV Blind Center M-F h. Holtville Gardens M-F i. Heber Elementary School Dst M-W, F.	IC Area Agency on Aging	IC Area Agency on Aging	On-going	Community Programs and Resources
Congregate Nutrition Site - Transportation	ARC Dial-A-Ride for ELC and Imp Cixo Dial-A-Ride for Cixo Bry Dial-A-Ride for Bry	Dial-A-Ride	Dial-A-Ride	On-going	Community Programs and Resources
Senior Health Services: Senior Health Clinics provide routine health screening to assist older individuals in improving or maintaining physical health.	Various locations	ICPHD - Senior Health Clinic		On-going	Clinical- Community Linkages

Services offered include organized daily activities in a community-based setting, transportation, meals, and professional supervision. Contact Alegria ADHC Center for more details on respite care services and rates.	Calexico	Alegria Adult Day Health Care	Bernardo Ng, MD 2001		Clinical- Community Linkages
Services offered include organized daily activities in a community-based setting, transportation, meals, and professional supervision. Contact DayOut ADHC - El Centro for more details on respite care services and rates.	El Centro	DayOut Adult Day Health Care Center	Dacare, Inc.		Clinical- Community Linkages
Services offered include organized daily activities in a community-based setting, transportation, meals, and professional supervision. Contact DayOut ADHC - Brawley for more details on respite care services and rates.	Brawley	DayOut Adult Day Health Care Center	Dacare, Inc.		Clinical- Community Linkages
Services offered include organized daily activities in a community-based setting, transportation, meals, and professional supervision. Contact The Valley Inn ADHC Center for more details on respite care services and rates.	Holtville	The Valley Inn Adult Day Health Care Center			Clinical- Community Linkages
Services include: bathing, grooming, and hygiene; medication reminders and safety supervision, companionship, meals, housekeeping, transportation, activities, and special services (dementia care, hospice and palliative care).	Valley-wide	Heart and Hands Assisted Living (licensed for dementia care)	Jennifer McGrew-Thompson and Patti McGrew		Clinical- Community Linkages
Through the Senior Companion Program , people age 60 and older provide assistance and friendship to homebound adults. Senior Companions serve frail older adults and their caregivers, adults with disabilities, and those with terminal illnesses. Senior Companions usually serve two to four clients on a weekly basis, serving 20 hours a week.	Valley-wide	Catholic Charities			Community Programs and Resources
Caregiver Support Group Meetings Respite Services	Caregiver	Valley-wide	AlzCare, Inc.		Community Programs and Resources

Workgroup Portfolios of Interventions

PRIORITY AREA: HEALTHY EATING, ACTIVE LIVING

<p>GOAL 1: Consumption of affordable, accessible, and nutritious foods</p> <p>MEASURE: % of children living in food secure households or % of low income households that are food secure</p> <p>BASELINE:</p> <ul style="list-style-type: none"> • 38.8% of children live in food insecure households¹ • 31% of low income households are food insecure² • 5.3 Food Environment Index³ 	<p>GOAL 2: Engagement in affordable and safe opportunities for physical activity</p> <p>MEASURE: % of children meeting all fitness standards</p> <p>BASELINE: 13.9% of 5th graders, 23.6% of 7th graders, and 30.3% of 9th graders meet all fitness standards.⁴</p>	<p>GOAL 3: Achieve and maintain healthy weight</p> <p>MEASURE: Adults with BMI >30</p> <p>BASELINE: 41.9% of adults with a BMI >30⁵</p>
<p>STRATEGIES/INTERVENTIONS</p>	<p>STRATEGIES/INTERVENTIONS</p>	<p>STRATEGIES/INTERVENTIONS</p>
<p>Develop, implement and evaluate gardens*</p> <ul style="list-style-type: none"> • Childcare Gardens • School Gardens • Community Gardens <p>Increase and promote availability of healthier and/or affordable food and beverage choices</p> <ul style="list-style-type: none"> • Worksite wellness • Healthy retail strategies • Store tours • Campaigns and community outreach events • Assess store score cards & healthy retail strategies (i.e. placement, promotional & healthy point of purchase strategies) • Identification of opportunities & barriers for addressing availability & access to healthier foods & beverages through environmental changes at various settings 	<p>Enhanced access to spaces for physical activity combined with informational outreach activities*</p> <ul style="list-style-type: none"> • Joint use agreements (use of school gyms and playgrounds, parks & recreation spaces, mall, etc.) • Indoor & outdoor physical activity opportunities for all ages (“active” blacktop, resource centers, gyms, etc.) • Cities & county non-motorized and general plans • Safe Routes to School Programs <p>Improve built environment to support walking and biking</p> <ul style="list-style-type: none"> • Cities & county non-motorized and general plans • Active Transportation & Safe Routes to School infrastructure grants 	<p>Increase and promote availability of healthier and/or affordable food and beverage choices*</p> <ul style="list-style-type: none"> • Worksite wellness • Healthy retail strategies • Store tours • Campaigns and community outreach events • Assess store score cards & healthy retail strategies (i.e. placement, promotional & healthy point of purchase strategies) • Identification of opportunities & barriers for addressing availability & access to healthier foods & beverages through environmental changes at various settings <p>Develop, implement and evaluate gardens</p> <ul style="list-style-type: none"> • Childcare Gardens • School Gardens • Community Gardens

Establishment of food recovery systems*

- Imperial Valley Food Bank
 - Recovery of edible, not saleable food from grocery stores & distributed to local soup kitchens & other sites/Feeding America
 - Recovery of surplus produce from the fields/California Association of Food Banks – Farm to Family
 - Divert food scraps/inedible produce to animals to reduce landfill waste
 - Local faith-based organizations
 - Recovery of edible, not saleable food from grocery stores & distributed to local faith organizations
 - Schools
 - Canned food drives
 - Composting Brawley Elementary School District
- Catholic Charities
 - School canned food drive donations
 - Private food donation

Develop, implement and evaluate healthy eating standards/policies*

- Convene through existing local groups (COPA, CNAP, etc.)to support the development of plans that support healthy eating and active living wellness policies at school districts, food distribution centers, shelters, and child care centers
- Meet with school districts, child care centers, shelters, and community organization administrators/management staff to discuss and assess the status of their wellness policies in place.
- Participate in school district, child care center, shelter, and community organization wellness, advisory, and/or parent committees and address healthy eating and active living practices and wellness policies
- Provide training to youth, adults, and key stakeholders on wellness policies, Smarter Lunchrooms Movement
- Use of media and public relation techniques
- Limit advertisements of less healthy foods and

Develop, implement and evaluate healthy eating and active living standards/policies*

- Convene through existing local groups (COPA, CNAP, etc.)to support the development of plans that support healthy eating and active living wellness policies at school districts, food distribution centers, shelters, and child care centers
- Meet with school districts, child care centers, shelters, and community organization administrators/management staff to discuss and assess the status of their wellness policies in place.
- Participate in school district, child care center, shelter, and community organization wellness, advisory, and/or parent committees and address healthy eating and active living practices and wellness policies
- Provide training to youth, adults, and key stakeholders on wellness policies, Smarter Lunchrooms Movement
- Use of media and public relation techniques
- Limit advertisements of less healthy foods and beverages

Build capacity to implement active living policy at the community level and by community organizations

- Train key stakeholders from targeted community organizations, school districts and/or city on PSE 101, Safe Routes to School programs, and other active living PSE change strategies.

Support social marketing campaigns*

- Behavioral/Mental Health campaign
- Public service announcements (healthy eating, breastfeeding, etc.)
- Latino Health Awareness Month
- Go Human Campaign
- Veggie Fest
- Champions for Change
- Imperial County Breastfeeding Coalition campaigns

Develop, implement and evaluate healthy eating and beverage standards/policies

- Convene through existing local groups (COPA, CNAP, etc.)to support the development of plans that support healthy eating and active living wellness policies at school districts, food distribution centers, shelters, and child care centers
- Meet with school districts, child care centers, shelters, and community organization administrators/management staff to discuss and assess the status of their wellness policies in place.
- Participate in school district, child care center, shelter, and community organization wellness, advisory, and/or parent committees and address healthy eating and active living practices and wellness policies
- Provide training to youth, adults, and key stakeholders on wellness policies, Smarter Lunchrooms Movement
- Use of media and public relation techniques
- Limit advertisements of less healthy foods and beverages

Increase access to drinking water and less consumption of sugar- sweetened beverages

- ReThink Your Drink

Worksite Wellness Programs

- Activities at a few organizations (private & public)

Encourage participation in federal food and nutrition assistance programs (CalFresh, WIC, etc.)*

- Imperial Valley Food Bank - CalFresh Outreach
- Imperial Valley Food Bank – Emergency Food Assistance Program/USDA Food Commodities
- Imperial County Department of Social Services - Supplemental Nutrition Assistance Program (SNAP)/CalFresh
- Women, Infants, and Children (WIC)
- Summer Food Service Program (USDA)
- School Breakfast Program (USDA)
- National School Lunch Program (USDA)
- Child and Adult Care Food Program (USDA)
- Catholic Charities Senior Nutrition
- After School and Summer Children Nutrition Program - Neighborhood House

Education through various community settings on healthy eating, healthy beverages, and active living

- Indirect and direct education for youth and adults
- Indirect and direct training for organization staff

Increase access to and promote availability of healthier and/or affordable food and beverage choices

- Direct & indirect education for youth and adults at various settings
- ReThink Your Drink

Implement and support social marketing campaigns

- Behavioral/Mental Health campaign
- Public service announcements (healthy eating, breastfeeding, etc.)
- Latino Health Awareness Month
- Go Human Campaign
- Veggie Fest
- Champions for Change
- World Breastfeeding Week - Imperial County Breastfeeding Coalition
- Use of media and public relation techniques

Build/expand capacity to implement active living policy at the community level and by community organizations*

- Local conference with national speakers
- Train key stakeholders from targeted community organizations, school districts and/or city on PSE 101, Safe Routes to School programs, and other active living PSE change strategies.

Education through various community settings on healthy eating, healthy beverages, and active living

- Indirect and direct education for youth and adults
- Walk and Bike to School events
- Train youth on topics such as PSE 101, benefits of physical activity, healthy and safe physical environments, and advocacy skills

Implement and support social marketing campaigns

- Behavioral/Mental Health campaign
- Public service announcements (healthy eating, breastfeeding, etc.)
- Latino Health Awareness Month
- Go Human Campaign
- Veggie Fest
- Champions for Change
- World Breastfeeding Week - Imperial County Breastfeeding Coalition
- Use of media and public relation techniques

Improve the capacity of child care providers to provide children with opportunities for physical activity

- Delivery of child care provider workshops

Enhance access to places for physical activity combined with informational outreach activities

- General community outreach events, Walk to School, Bike to School
- Cities, parks & recreation

Implement and support social marketing campaigns*

- Behavioral/Mental Health campaign
- Public service announcements (healthy eating, breastfeeding, etc.)
- Latino Health Awareness Month
- Go Human Campaign
- Veggie Fest
- Champions for Change
- World Breastfeeding Week - Imperial County Breastfeeding Coalition
- Use of media and public relation techniques

Education through various community settings on healthy eating, healthy beverages, and active living

- Indirect and direct education for youth and adults

Increase access to and promote availability of healthier and/or affordable food and beverage choices

- Direct & indirect education for youth and adults at various settings
- ReThink Your Drink

Encourage participation in federal food and nutrition assistance programs (CalFresh, WIC, etc.)*

- Imperial Valley Food Bank - CalFresh Outreach
- Imperial Valley Food Bank – Emergency Food Assistance Program/USDA Food Commodities
- Imperial County Department of Social Services - Supplemental Nutrition Assistance Program (SNAP)/CalFresh
- Women, Infants, and Children (WIC)
- Summer Food Service Program (USDA)
- School Breakfast Program (USDA)
- National School Lunch Program (USDA)
- Child and Adult Care Food Program (USDA)
- Catholic Charities Senior Nutrition
- After School and Summer Children Nutrition Program -Neighborhood House

Support breastfeeding

- Imperial County Breastfeeding Coalition

<p>Community Health Workers/Case Managers/Home Visiting/Navigators**</p> <ul style="list-style-type: none"> <i>Clinicas de Salud del Pueblo, Inc.</i> <i>Imperial County Home Visiting Program</i> <i>Imperial County Maternal, Child and Adolescent Health</i> <i>Promotoras Independientes del Valle</i> <i>Comité Cívico del Valle</i> <i>Child Asthma Program</i> <i>California Health & Wellness</i> <i>Molina Healthcare</i> <p>Establishment of a centralized referral system</p> <ul style="list-style-type: none"> <i>Nutrition and Physical Activity Directory (Childhood Obesity Prevention Alliance)</i> 	<p>Community Health Workers/Case Managers/Home Visiting/Navigators**</p> <ul style="list-style-type: none"> <i>Clinicas de Salud del Pueblo, Inc.</i> <i>Imperial County Home Visiting Program</i> <i>Imperial County Maternal, Child and Adolescent Health</i> <i>Promotoras Independientes del Valle</i> <i>Comité Cívico del Valle</i> <i>Child Asthma Program</i> <i>California Health & Wellness</i> <i>Molina Healthcare</i> <p>Establishment of a centralized referral system</p> <ul style="list-style-type: none"> <i>Nutrition and Physical Activity Directory (Childhood Obesity Prevention Alliance)</i> 	<p>Community Health Workers/Case Managers/Home Visiting/Navigators**</p> <ul style="list-style-type: none"> <i>Clinicas de Salud del Pueblo, Inc.</i> <i>Imperial County Home Visiting Program</i> <i>Imperial County Maternal, Child and Adolescent Health</i> <i>Promotoras Independientes del Valle</i> <i>Comité Cívico del Valle</i> <i>Child Asthma Program</i> <i>California Health & Wellness</i> <i>Molina Healthcare</i> <p>Establishment of a centralized referral system</p> <ul style="list-style-type: none"> <i>Nutrition and Physical Activity Directory (Childhood Obesity Prevention Alliance)</i>
<p>Develop, implement and evaluate healthy eating & active living standards/policy</p> <ul style="list-style-type: none"> Support & promote breastfeeding Prescribe healthy eating regimen (medical providers) Behavioral/mental health services <i>Lactation support/consultants</i> <i>Imperial County Breastfeeding Coalition</i> 	<p>Develop, implement and evaluate healthy eating & active living standards/policy</p> <ul style="list-style-type: none"> Prescribed healthy eating and physical activity regimen (medical providers) Quality of life, healthy eating, physical activity, heat, heat strokes, dehydration, etc. Limit screen time 	<p>Develop, implement and evaluate healthy eating & active living standards/policy</p> <ul style="list-style-type: none"> Prescribe healthy eating and/or physical activity regimen (medical providers) Behavioral/mental health services

STRATEGIES/INTERVENTIONS COLOR CODING: **bolded in orange, strategies selected by the workgroup; bolded in black, strategies currently being implemented at some level in Imperial County;** bulleted & in black *italics*, activities associated with the strategy/intervention & currently being implemented in Imperial County at some level; and bulleted, in orange, and no italics, activities suggested by the workgroup, but unknown if they are currently implemented in Imperial County.

*Strategies currently being implemented in Imperial County at some level

** Although not solely focused on Healthy Eating, Active Living efforts, Clinicas de Salud del Pueblo, Inc., Promotoras Independientes del Valle, Imperial County Public Health Department, and other agencies in the community, have a small cohort of Community Health Workers, Case Manager, and/or Home Visiting staff currently active.

1. Kidsdata.org 2012
2. California Food Policy Advocates 2014
3. County Health Rankings & Roadmaps [Index of factors that contribute to a healthy food environment, 0 (worst) to 10 (best)] (% of limited access to healthy food & % food insecurity)2012
4. Kidsdata.org 2015
5. California Health Interview Survey 2014

WORK GROUP CONSOLIDATED PORTFOLIOS

PRIORITY AREA: COMMUNITY PREVENTION LINKED WITH HIGH-QUALITY HEALTH CARE

<p>GOAL 1: Optimal asthma detection, management and education</p> <p>SHORT-TERM MEASURE/OUTCOME/TARGET: Increase the number of children and adults who are educated in self-managing their asthma and reducing environmental triggers</p> <p>LONG-TERM MEASURE: Reduce rates of emergency department visits due to asthma</p> <p>BASELINE:</p> <ul style="list-style-type: none"> • 152.5 per 10,000 children aged 0-17¹ (2012) • 52.0 per 10,000 adults aged 18+¹ <p>LONG-TERM MEASURE: Rates of hospitalizations due to asthma</p> <p>BASELINE:</p> <ul style="list-style-type: none"> • 30.6 per 10,000 children aged 0-17¹ • 11.9 per 10,000 adults aged 18+¹ 	<p>GOAL 2: Optimal reproductive health</p> <p>MEASURE: Increase percentage of pregnant women who receive adequate prenatal care</p> <p>BASELINE: 57.8% of pregnant women receive adequate/adequate plus prenatal care</p>	<p>GOAL 3: Optimal diabetes detection, management and education</p> <p>SHORT-TERM MEASURE: Increase prevention behaviors in persons at high risk for diabetes with pre-diabetes (HP 2020)</p> <p>BASELINE: % adults age 18+ at risk for diabetes with pre-diabetes who report increasing levels of physical activity (need data)</p> <p>BASELINE: 41.9% of adults with a BMI >30⁵</p> <p>MEASURE: Reduce % with prediabetes and diabetes</p> <p>BASELINE: 40% prediabetic; 18% diabetic⁶</p> <p>LONG-TERM MEASURE: Rate of preventable hospitalizations due to short-term complications of diabetes</p> <p>BASELINE: 39.7 discharges per 100,000 population age 18+¹ (2013)</p> <p>LONG-TERM MEASURE: Reduce costs associated with hospitalization due to diabetes (age 35+)</p> <p>BASELINE: 40.1% of hospitalizations for patients age ≥35 with estimated additional costs for hospital stays for diabetes of \$9.5 million⁶</p>
<p>STRATEGIES/INTERVENTIONS</p>	<p>STRATEGIES/INTERVENTIONS</p>	<p>STRATEGIES/INTERVENTIONS</p>
<p><i>Integrate asthma metrics and outcomes as benchmarks in Salton Sea Restoration and Renewable Energy Initiative and Salton Sea Mitigation Plan.</i></p>		<p>Increase and promote availability of healthier and/or affordable food and beverage choices</p> <ul style="list-style-type: none"> • <i>Worksite wellness</i> • <i>Healthy retail strategies</i> • <i>Store tours</i> • <i>Campaigns and community outreach events</i> • <i>Assess store score cards & healthy retail strategies (i.e. placement, promotional & healthy point of purchase strategies)</i> • <i>Identification of opportunities & barriers for addressing availability & access to healthier foods & beverages through environmental changes at various settings</i> • <i>Campaigns and community outreach events</i> • <i>Assess store score cards & healthy retail strategies (i.e. placement, promotional & healthy point of purchase strategies)</i>

		<ul style="list-style-type: none"> • Identification of opportunities & barriers for addressing availability & access to healthier foods & beverages through environmental changes <p>Enhanced access to spaces for physical activity combined with informational outreach activities*</p> <ul style="list-style-type: none"> • Joint use agreements (use of school gyms and playgrounds, parks & recreation spaces, mall, etc.) • Indoor & outdoor physical activity opportunities for all ages (“active” blacktop, resource centers, gyms, etc.)\ • Cities & county non-motorized and general plans • Safe Routes to School Programs
<p>Increase quality of care for child asthma through the adoption & implementation of NAEPP training for asthma care across safety net</p> <p>Increase consistency of information for children/families with asthma and community through the adoption of training standards for Community Health Workers/Promotoras across agencies/organizations.</p>		
<p>Improve asthma management in schools through partnership with school nurses and increased compliance with Guidelines for the Management of Asthma in California Schools and Flag Alert Program w/ priority target of schools located in asthma disparity communities</p> <p>Reduce exposure to second-hand smoke, through the adoption and implementation of voluntary smoke-free multi-unit housing policies w/ priority target of disparity communities</p>	<p>Community / Provider Education</p> <ul style="list-style-type: none"> • Develop and implement a social media plan that targets pregnant women to increase awareness and access to prenatal care (ICPHD MCAH) • Becoming a Mom/Comenzando Bien (March of Dimes) • Every Woman, Every Time (March of Dimes) • Go Before You Show (March of Dimes) • Healthy Babies are Worth the Wait (March of Dimes) 	<p>Promote Diabetes Risk Test</p> <ul style="list-style-type: none"> • Assess risk and need to seek health-care provider for diagnosis –American Diabetes Association <p>Community Education</p> <ul style="list-style-type: none"> • Educational materials sent electronically or via mail; free text messaging program with motivational texts to help individuals manage or prevent diabetes <p>Implement and support social marketing campaigns</p> <ul style="list-style-type: none"> • Behavioral/Mental Health campaign • Public service announcements (healthy eating, breast feeding) • Latino Health Awareness Month • Go Human Campaign • Veggie Fest • Champions for Change • World Breastfeeding Week - Imperial County Breastfeeding Coalition • Use of media and public relation techniques

Integrate family centered assessment and linkages with community resources/programs in home based asthma intervention w/ priority target of families residing in asthma disparity communities

Community Health Workers/Case Managers/Home Visiting/Navigators**

- Provide outreach, education, referral and follow-up, case management, advocacy, and home visiting services.
- Target women who are at high risk for poor birth outcomes and provide pregnant with emotional and practical support, and education on topics such as family planning, pregnancy, childbirth.

(Clinicas de Salud del Pueblo, Imperial County Home Visiting Program, Imperial County Maternal, Child and Adolescent Health, Promotoras Independientes del Valle, Comité Civico del Valle, Fuerza Campesina, California Health & Wellness, Molina Healthcare)

Linkage between ICPHD MCAH Adolescent Health services to partner agencies to provide information and resources on prenatal care and preconception health.

- March of Dimes
- Clinicas
- Children and Families First Commission
- WIC

Community Health Workers/Case Managers/Home Visiting/Certified

Diabetes Educator**

- Pioneers Memorial Hospital
- El Centro Regional Medical Center
- Clinicas de Salud del Pueblo, Inc.
- Imperial County Home Visiting Program
- Imperial County Maternal, Child and Adolescent Health
- Promotoras Independientes del Valle
- Comité Civico del Valle
- Fuerza Campesina
- California Health & Wellness
- Molina Healthcare

Establish centralized referral system for Nutrition/Physical Activity

- Nutrition and Physical Activity Directory (Childhood Obesity Prevention Alliance)

Emergency Department Diversion Program

- Home visits for Medi-Cal patients with more than 3 visits to ED within 3 months; Connect with nurse case-manager at CA Health & Wellness, make clinic appointments, problem-solve barriers to care (Clinicas)

<p><i>Focus and stabilize home based multi-component family/patient education with environmental focus and community resource linkages to reduce asthma exacerbations and increase successful long-term asthma management w/ priority target of children residing in asthma disparity communities; Improve linkage between acute care/specialty services and primary care w/ priority target of ED discharge linkage to primary care and primary care linkage to allergy specialist.</i></p>	<p>Chronic Care Model & patient-centered Medical Home Model</p> <ul style="list-style-type: none"> <i>Systematic care team training on policies and national guidelines</i> <i>Customized electronic health record that offers clinicians tools for care such as care guidelines, care or action plans, disease management templates, educational handouts</i> <i>Standardized referral mechanisms for specialty care; follow national guidelines (Clinicas de Salud).</i> <p>Certified Nurse Midwives</p> <ul style="list-style-type: none"> <i>Provide indepth prenatal education and services in OB-GYN clinic in rural health center (Pioneers)</i> <p>Increase in Comprehensive Perinatal Services Program (CPSP) Providers</p> <ul style="list-style-type: none"> <i>Provide comprehensive services to Medi-Cal eligible women for up to 60 days after delivery</i> <i>Develop training plan for local providers</i> <i>Develop a system for tracking women accessing CPSP providers</i> 	<p>Chronic Care Model & patient-centered Medical Home Model</p> <ul style="list-style-type: none"> <i>Systematic care team training on policies and national guidelines</i> <i>Customized electronic health record that offers clinicians tools for care such as care guidelines, care or action plans, disease management templates, educational handouts</i> <i>Standardized referral mechanisms for specialty care; follow national guidelines (Clinicas de Salud).</i>
--	--	--

STRATEGIES/INTERVENTIONS COLOR CODING: **bolded in orange**, strategies selected by the workgroup; **bolded in black**, strategies currently being implemented at some level in Imperial County; bulleted & in black *italics*, activities associated with the strategy/intervention & currently being implemented in Imperial County at some level; and bulleted, in orange, and no italics, activities suggested by the workgroup, but unknown if they are currently implemented in Imperial County.

*Strategies currently being implemented in Imperial County at some level

** Although not solely focused on Healthy Eating, Active Living efforts, Clinicas de Salud del Pueblo, Inc., Promotoras Independientes del Valle, Imperial County Public Health Department, and other agencies in the community, have a small cohort of Community Health Workers, Case Manager, and/or Home Visiting staff currently active.

SOURCES:

1. Office of Statewide Health Planning and Development, 2012-2013
2. California Food Policy Advocates 2014
3. County Health Rankings & Roadmaps [Index of factors that contribute to a healthy food environment, 0 (worst) to 10 (best)] (% of limited access to healthy food & % food insecurity)2012
4. Kidsdata.org 2015
5. California Health Interview Survey 2014
6. UCLA Center for Health Policy Research, May 2014 [www.publichealthadvocacy.org]

PRIORITY AREA: HEALTHY AND SAFE COMMUNITIES AND LIVING ENVIRONMENT

<p>GOAL 1: Engagement in improving air quality</p> <p>MEASURE: Engagement in EPA school flag program; SIP and Salton Sea efforts</p> <ul style="list-style-type: none"> Environmental mitigation efforts completed # of acres of habitat restored Implementation of dust mitigation projects 	<p>GOAL 2: Mobilize efforts to prevent prescription drug abuse</p> <p>MEASURES:</p> <ul style="list-style-type: none"> Number of dispensers and prescribers consistently using Cures system (and features) Number of providers who are following the 2016 CDC Guidelines for Prescribing Opioids for Chronic Pain Percent of discrepancies that are unresolved within 24 hours in hospital EDs Number of patients who OD on Rx narcotics Comprehensive internal diversion program teams in both hospitals established Countywide diversion taskforce/program established Number of accidental Rx overdoses 	<p>GOAL 3: Mobilize efforts to support and link family members, caregivers, and persons living with dementia, across systems</p> <p>MEASURES:</p> <ul style="list-style-type: none"> Number of social admissions to the ED for persons with dementia Countywide dementia-focused taskforce established Number of providers who have participated in trainings that cover current guidelines for dementia diagnosis and assessment and care guidelines Number of trained caregivers and family members for person's living with dementia
STRATEGIES/INTERVENTIONS	STRATEGIES/INTERVENTIONS	STRATEGIES/INTERVENTIONS
<p>Border2020 Task Force</p> <ul style="list-style-type: none"> Reduce pollutant emissions <p>Salton Sea Restoration and Renewable Energy Initiative</p> <ul style="list-style-type: none"> Habitat restoration Dust management in remote areas <p>Salton Sea Mitigation Plan</p>	<p>Increased awareness and support/promotion of opportunities to educate the public on risks of prescription drug use and how to avoid misuse.</p> <ul style="list-style-type: none"> Safe storage of medications in the home Proper disposal of unused/expired medications through appropriate self/home disposal, community disposal (take back programs) Two annual National Take-Back-Day Events 	
	<p>Develop, implement and evaluate a countywide Diversion Program to develop guidelines surrounding: prevention efforts, detection and response activities, policies and procedures, educational programs, and track analyze data trends surrounding diversion events.</p> <ul style="list-style-type: none"> PMHD creating an internal diversion program 	<p>Expand and Enhance existing clinical rotations, internship hours, intern opportunities</p> <ul style="list-style-type: none"> Local higher education institutions (IVC, SDSU) to include a psychiatric/nursing/EMT/social service rotation as part of the overall rotation requirements.
	<p>Revisit local participation on and coordination of the San Diego and Imperial County Prescription Drug Abuse Medical Task Force</p>	<p>Enhance, coordinate and implement a social marketing /media campaign with supporting message points and print materials</p> <ul style="list-style-type: none"> Local agencies that focus on/target person's living

	<ul style="list-style-type: none"> • <i>The San Diego and Imperial County Prescription Drug Abuse Medical Task Force – unsure about local participation</i> <p>Coordinate and implement a social marketing /media campaigns</p> <ul style="list-style-type: none"> • Evidence-based and effective public education (The Medicine Abuse Project, Rx for Understanding, Peerx) and personal stories • Alcohol and Drug Coalition: <i>(Youth and Young Adults only) prevention updates (Strategic Prevention Plan) and the Strategic Framework Prevention Plan goals are to reduce marijuana use in Imperial County, decrease access to alcohol among underage persons, and promote community awareness to decrease the use of alcohol and other drugs. Three focus areas: 1) Information Dissemination: Increases knowledge and provides community awareness of available prevention programs and services. Educate the communities about specific substance abuse and health-related risks, and other activities to promote positive and healthy lifestyles. Examples are presentations at conferences, booths or tables set up to display informational materials. 2) Education Strategy: This is where we go out to the schools sites primarily focusing on 9th and 11th grades using the Too Good for Drugs evidenced based curriculum. We also conduct drug and alcohol educational presentations throughout the course of the year to bring awareness to the community/schools/agencies. 3) Environmental Strategy: This strategy focuses places and specific problems, with an emphasis on public policy. I mentioned last week that four (4) local high schools are participating in a media clip focusing on Healthy Lifestyles and the winning school media clip will be airing at I.V. mall and Calexico 10 Theater.</i> 	<p>with dementia and their caregivers/family members</p> <p>Enhance and coordinate existing locations/sites for Dementia related materials</p> <ul style="list-style-type: none"> • Centralized website, • Local clearinghouse for information and resources <p>Enhance and coordinate existing informational sessions that focus on local caregiver and family support services (Senior Companion Program, Respite Care, Day Out Opportunities, Alzs Care, etc.) in an effort to discuss barriers, challenges, opportunities, service delivery enhancement/expansion, etc.</p> <ul style="list-style-type: none"> • Catholic Charities - Companion Program • Imperial County Area Agency on Aging - Respite Care • Day Out Programs • Alzs Care <p>Enhance and strengthen existing coalitions/boards/groups that currently meet around the topic of Dementia, by coordinating and hosting an information meeting to include agencies, organizations, and persons with dementia, caregivers and family members who currently do not participate.</p> <p>Build and strengthen existing support group services for family members and caregivers of persons with dementia.</p> <ul style="list-style-type: none"> • Caregiver Support Group Meetings • Caregiver Respite Services
	<p>Expand access to and availability of effective treatment options as a key component of any strategy to combat prescription drug abuse</p> <ul style="list-style-type: none"> • The Drug Medi-Cal Organized Delivery System (DMC-ODS): <i>a pilot program to test a new model for the organized delivery of health care services for Medi-Cal eligible individuals with a Substance Use Disorder. The waiver will make improvements</i> 	<p>Coordinate with local organizations, groups, and agencies (Alz Care, Catholic Charities – Senior Companion Program, Area Agency on Aging - Respite Care, IHSS Program etc.,) to discuss gaps, barriers, challenges and strategies/opportunities to enhance and expand resources and services.</p> <ul style="list-style-type: none"> • <i>In-Home Supportive Services (IHHS) Program: Available to Medi-Cal eligible individuals only</i>

	<p><i>to the Drug Medi-Cal service delivery system by focusing on critical elements: example: increase coordination with other systems of care including physical and mental health.</i></p>	<ul style="list-style-type: none"> <i>Respite Care: (only for those who are eligible for Medi-Cal or private pay).</i>
	<p>Increase and enhance use of CURES 2.0 system among prescribers and dispensers by way of a</p> <ul style="list-style-type: none"> Enhance existing training/information programs for different disciplines <i>Enhance existing training program (evening lectures, workshops, quarterly meetings) that include CME's and best practice models that is specific for disciplines (physicians, nurses, medical assistants, etc) to ensure responsible prescribing practices including consistent utilization of the CURES 2.0 system.</i> 	<p>Enhance and coordinate existing training programs sessions</p> <ul style="list-style-type: none"> Evening lectures, workshops, quarterly meetings) CME's and best practice models for professionals (physicians, nurses, law enforcement, clergy, etc.,) <p>Up-to-date dementia care practices that addresses use of a comprehensive dementia assessment, dementia care guidelines, cultural sensitivity, age and physiological differences, home safety issues, the environment and day/night reversal issues, etc.</p>

STRATEGIES/INTERVENTIONS COLOR CODING: **bolded in orange, strategies selected by the workgroup;** **bolded in black, strategies currently being implemented at some level in Imperial County;** bulleted & in black *italics*, activities associated with the strategy/intervention & currently being implemented in Imperial County at some level; and bulleted, in orange, and no italics, activities suggested by the workgroup, but unknown if they are currently implemented in Imperial County.