

# RESPIRATORY ILLNESS SURVEILLANCE UPDATE

## INFLUENZA SEASON 2021-2022

WEEKS 13-15 (MARCH 27-APRIL 16, 2022)



The Imperial County Public Health Department with the support of the Naval Health Research Center laboratory (NHRC) in San Diego and the Border Infectious Disease Surveillance Program conduct active epidemiologic surveillance for respiratory illnesses caused by SARS-CoV-2, influenza, and other respiratory viruses. Surveillance is conducted at Innercare (formerly Clinicas de Salud del Pueblo) in Calexico, El Centro, and Brawley, and emergency departments at El Centro Regional Medical Center and Pioneers Memorial Healthcare District.

**Case Definitions:**

**COVID-LIKE ILLNESS (CLI)**

At least **TWO** of the following symptoms:

- Fever/Feverish/ Chills
- Headache
- Nausea
- Sore throat
- Body aches
- Vomit
- Rhinorrhea
- Muscle aches
- Diarrhea
- Recent loss of taste/smell
- Fatigue/weakness
- Abdominal pain

**OR** at least **ONE** of the following symptoms:

- Cough
- Shortness of Breath
- Difficulty breathing

**INFLUENZA-LIKE ILLNESS (ILI)**

- Fever
- Cough and/or Sore Throat

**OUTPATIENT SENTINEL SITES ACTIVE RESPIRATORY ILLNESS SURVEILLANCE**

**Epidemiologic weeks 13-15**

Total enrolled: **7**

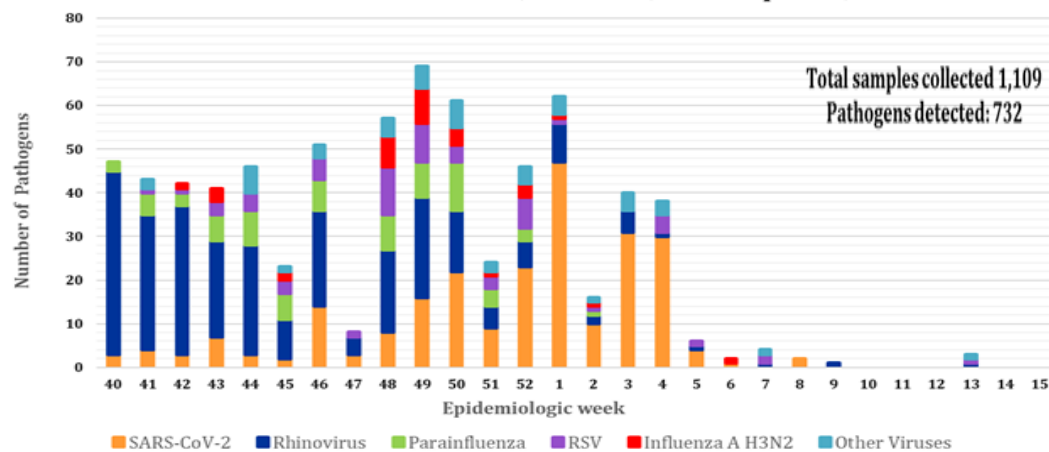
Female: **3 (43%)**

Male **4 (57%)**

Patient age range: **1 year-50 years**

Median age: **5 years**

**Trend of Respiratory Pathogens Identified at Sentinel Sites Influenza Season 2021-2022, October 3, 2021 - April 16, 2022**



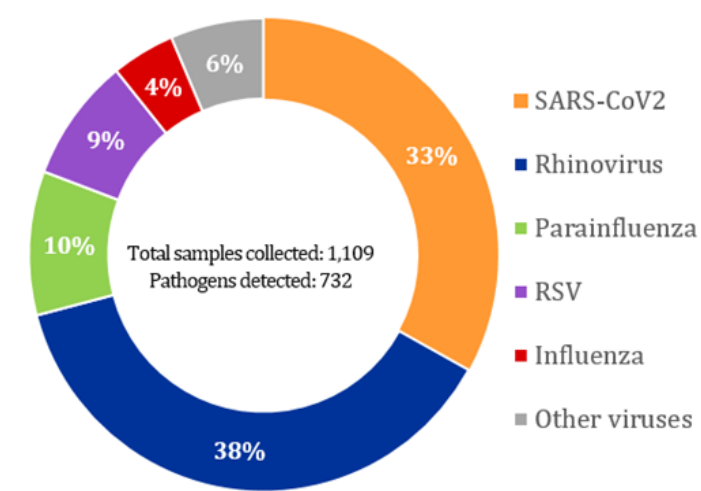
Other viruses: Corona 229E, NL63, OC43, HKU1, adenovirus, bocavirus, parainfluenza 1-4.

**ACTIVE CLI/ILI SURVEILLANCE BY AGE GROUP**

Innercare: Calexico, Brawley, and El Centro  
October 3, 2021-April 16, 2022

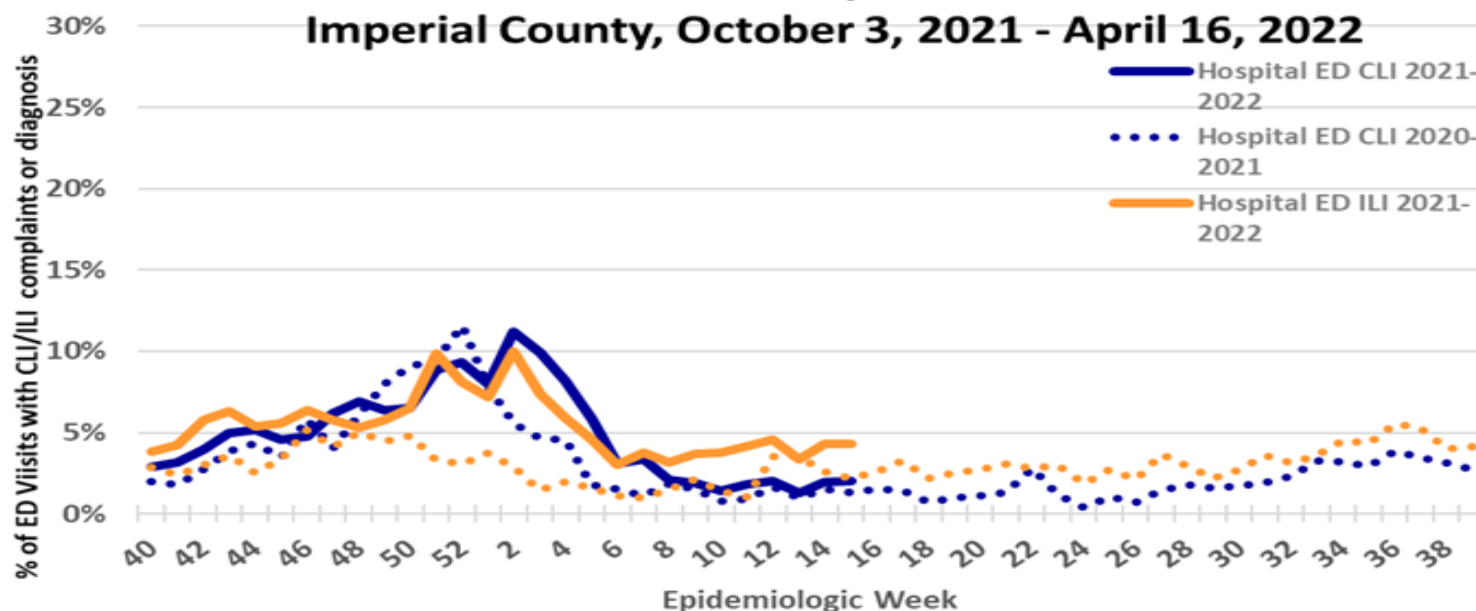
Age Group	Week 11		Week 12		Week 13		Week 14		Week 15		2021-2022 Flu Season Total	
	CLI/ILI Cases	COVID-19 Cases n(%)	CLI/ILI Cases	COVID-19 Cases n(%)	CLI/ILI Cases	COVID-19 Cases n(%)	CLI/ILI Cases	COVID-19 Cases n(%)	CLI/ILI Cases	COVID-19 Cases n(%)	CLI/ILI Cases	COVID-19 Cases n(%)
0-4	0	0 (0)	1	0 (0)	1	0 (0)	0	0 (0)	1	0 (0)	173	23 (13)
5-24	4	0 (0)	4	0 (0)	1	0 (0)	0	0 (0)	3	0 (0)	554	102 (19)
25-49	0	0 (0)	0	0 (0)	0	0 (0)	0	0 (0)	0	0 (0)	267	73 (27)
50-64	0	0 (0)	0	0 (0)	1	0 (0)	0	0 (0)	0	0 (0)	114	29 (26)
≥65	0	0 (0)	0	0 (0)	0	0 (0)	0	0 (0)	0	0 (0)	44	14 (32)
<b>Total</b>	<b>4</b>	<b>0 (0)</b>	<b>5</b>	<b>0 (0)</b>	<b>3</b>	<b>0 (0)</b>	<b>0</b>	<b>0 (0)</b>	<b>4</b>	<b>0 (0)</b>	<b>1,152</b>	<b>241 (21)</b>

**Breakdown of Pathogens Identified at NHRC Influenza Season 2021-2022, October 3, 2021 - April 16, 2022 Innercare: Calexico, El Centro, and Brawley**



- The U.S. Centers for Disease Control and Prevention (CDC) estimates that, so far this season, there have been at least 4.7 million flu illnesses, 47,000 hospitalizations, and 2,800 deaths from flu nationwide.
- Respiratory illness activity in the California border region during week 15 was lower when compared to activity for the same week during the 2019-2020 influenza season and higher for the same week during 2020-2021 season.
- In Imperial County, a total of 1,152 case-patients have been enrolled in the Respiratory Illness Surveillance project since the beginning of the flu season to surveillance week 15. Overall, 1,109 samples collected from cases have been analyzed. The number of cases with CLI and ILI symptoms are minimal, and no cases positive for SARS-CoV-2 have been identified during weeks 13, 14 or 15. Respiratory virus activity is very low.

**Emergency Department Visits with Chief Complaints for ILI and CLI Imperial County, October 3, 2021 - April 16, 2022**



NOTE: Influenza-like illness (ILI) is defined as fever (>100°F or 37.8°C) and cough and/or sore throat, in the absence of a known cause  
COVID-like illness (CLI) is defined as fever and cough, shortness of breath, or difficulty breathing OR coronavirus diagnostic codes.



SURVEILLANCE SYSTEM HOSPITAL RAPID		
Test	Weeks 13-15	Total as of week 15
<b>PCR SARS-CoV-2</b>		
Total Tests	629	9,980
Positive (n/%)	6 (0.10%)	1,295 (13%)
<b>Influenza antigen</b>		
Total Tests	106	781
Positive (n/%)	4 (4%)	28 (4%)
Flu A	4 (100%)	27 (96%)
Flu B	0 (0%)	1 (4%)
<b>RSV antigen</b>		
Total Tests	72	316
Positive (n/%)	0 (0%)	5 (2%)

# SEVERE ACUTE RESPIRATORY INFECTION SURVEILLANCE

## INFLUENZA SEASON 2021-2022

### WEEKS 13-15 (MARCH 27-APRIL 16, 2022)



Epidemiologic surveillance for Severe Acute Respiratory Infections (SARI) has been conducted at El Centro Regional Medical Center and Pioneers Memorial Healthcare District since 2009 with the support of the Naval Health Research Center laboratory in San Diego, CA, and the Border Infectious Disease Surveillance project.

#### SARI SURVEILLANCE UPDATE

**HOSPITAL SENTINEL SITES  
ACTIVE SARI SURVEILLANCE  
PMHD & ECRMC**

**Epidemiologic weeks 13-15**

**Total enrolled: 27**

**10 (37%) female**

**17 (63%) male**

**Patient age range: 4 months – 92 years**

**Median age: 70 years**

During surveillance weeks 13-15, 27 case-patients were enrolled in the project at both sentinel hospitals. Of these, 6 (22%) tested positive for SARS-CoV-2.

Since the beginning of the 2021-2022 flu season (Oct. 3, 2021) to week 15 (April 10-16, 2022), a total of 347 case-patients have been enrolled in the SARI project. Of these, 152 (42%) tested positive for SARS-CoV-2, with those 65 years of age and older being the most impacted age group with 72 cases (43%). Of the 72 cases, 47(65%) reported having hypertension; only 40 (56%) reported having received the Covid-19 vaccine.

#### SARI Case Definition:

Either of the following **TWO** case definitions:

1) Cough with:

- ♦ Shortness of Breath or Difficulty Breathing
- ♦ Hospital Admission ≥ 24 hours

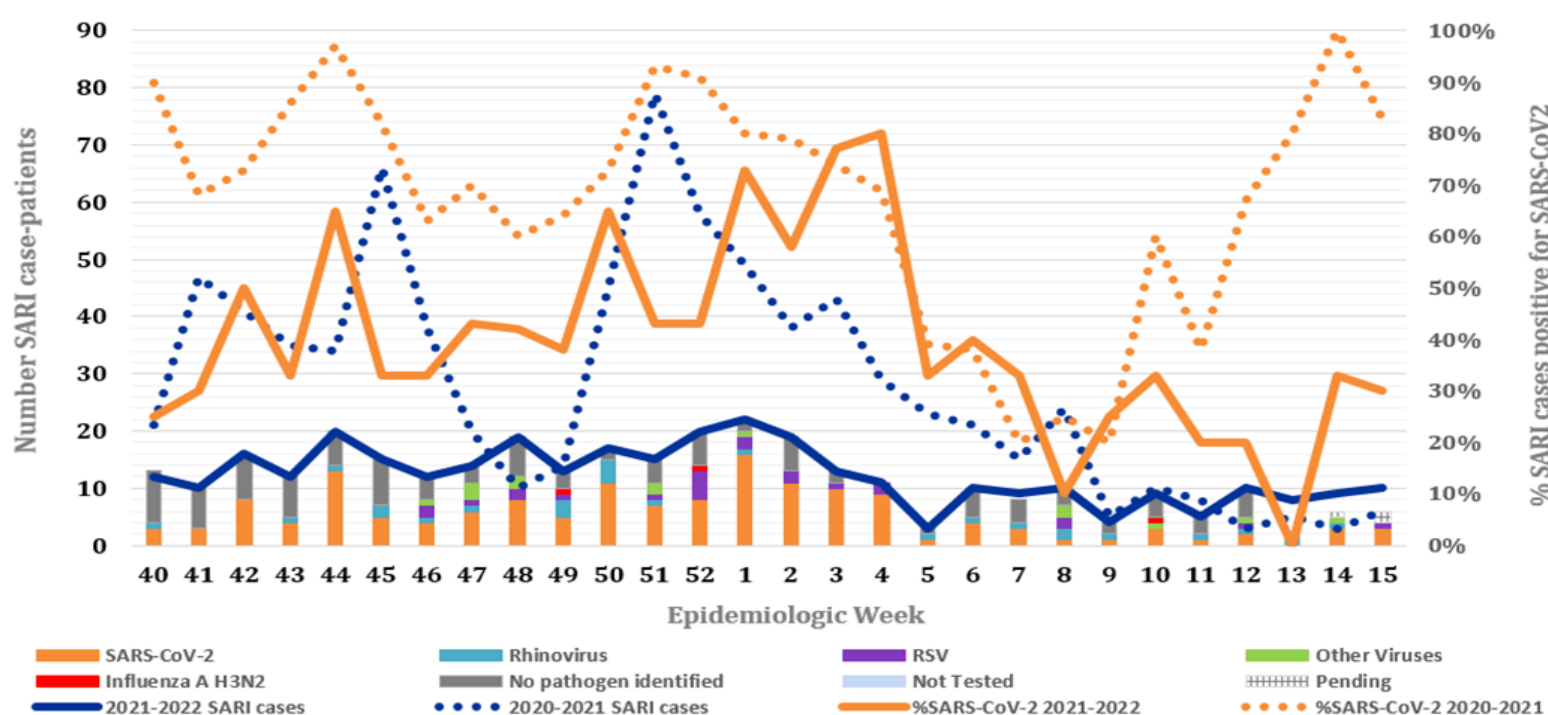
OR

2) Clinical and/or radiologic evidence of Pneumonia and Hospital Admission

#### SARI SURVEILLANCE BY AGE GROUP EL Centro Regional Medical Center & Pioneers Memorial Healthcare District Influenza Season 2021-2022

Cases by Age	Epidemiologic Week 11		Epidemiologic Week 12		Epidemiologic Week 13		Epidemiologic Week 14		Epidemiologic Week 15		2021-2022 Flu Season Total	
	SARI cases	COVID-19 Cases (%)	SARI cases	COVID-19 Cases (%)	SARI cases	COVID-19 Cases (%)	SARI cases	COVID-19 Cases (%)	SARI cases	COVID-19 Cases (%)	SARI cases	COVID-19 Cases (%)
0-4	0	0(0)	2	0(0)	1	0(0)	2	0(0)	0	0(0)	40	5 (13)
5-24	0	0(0)	0	0(0)	1	0(0)	0	0(0)	0	0(0)	16	3 (19)
25-49	1	0(0)	1	0(0)	0	0(0)	0	0(0)	0	0(0)	41	26 (63)
50-64	1	0(0)	1	0(0)	1	0(0)	4	3(75)	1	1(100)	81	46 (57)
≥ 65	3	1(33)	6	2(33)	5	0(0)	3	0(0)	9	2(22)	169	72 (43)
Total	5	1(20)	10	2(20)	8	0(0)	9	3(33)	10	3(30)	347	152 (44)

#### Trend of Respiratory Pathogens Identified at Sentinel Hospitals Influenza Season 2021-2022, October 3, 2021- April 16, 2022 (n=347)



#### Virologic Surveillance PCR-Confirmed Results Naval Health Research Center Lab & Hospital Labs 2021-2022 Influenza Season

Pathogens	Samples tested as of week 15 n= 347
<b>SARS CoV-2</b>	<b>152 (44%)</b>
<b>Influenza</b>	<b>3 (1%)</b>
A pH1N1	0
A H3N2	3
A no subtyped	0
B Victoria	0
<b>Rhinovirus</b>	<b>25 (7%)</b>
<b>Respiratory Syncytial Virus (RSV)</b>	<b>21 (6%)</b>
<b>Other viruses</b>	<b>15 (4%)</b>

Other viruses: Corona 229E, NL63, OC43, HKU1, adenovirus, bocavirus, parainfluenza 1-4.

\* New information—subject to change

For more information, or if you want to be included on our distribution list, contact:

Tania Montano at 442-265-7500 or taniamontano@co.imperial.ca.us OR Karla Ceballos at 442-265-7501 or karlaceballos@co.imperial.ca.us