

COVID-19

(coronavirus disease 2019)

Press Conference Update

March 18, 2021



Your Internet browser may be loading the page from its cache and may not reflect the most recent data. Please refresh your page and/or cache to view the most current version of the data. This dashboard provides surveillance information about the Coronavirus Disease 2019 (COVID-19). Data used to produce this dashboard is updated daily but is considered preliminary and subject to change as a result of ongoing investigations being conducted by the Imperial County Public Health Department.

Please note that only diagnostic tests from approved laboratories are reflected on this dashboard.

Total Tests

120,097

Evaluaciones Totales

Negative Tests

95,266

Evaluaciones Negativas

Total Positive Cases

24,831

Total de Casos Positivos

Active

51

Activos

Recovered

24,094

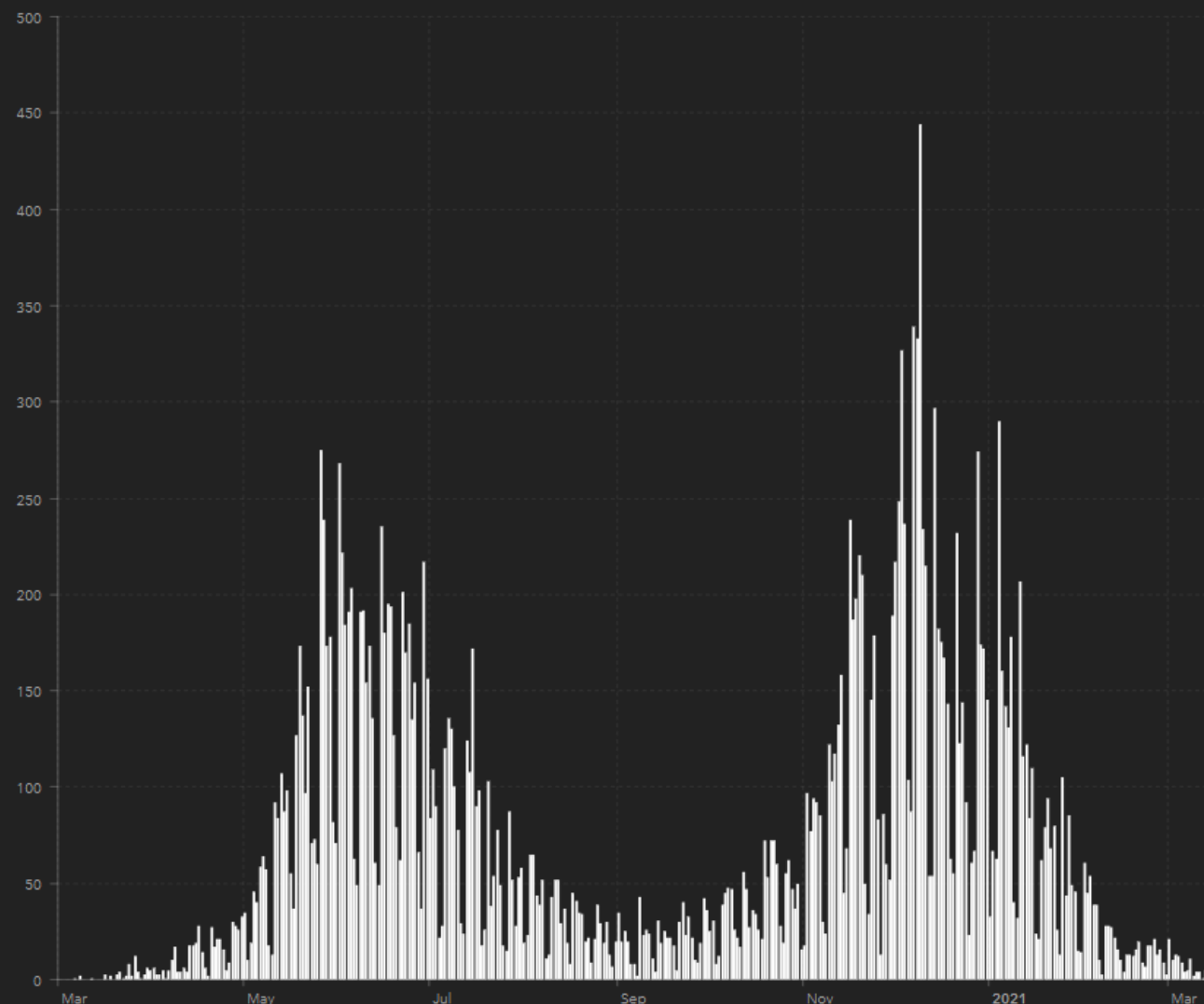
Recuperados

Deaths

686

Defunciones

Positive Cases by Collection Date



Cases by Location

92231

Total Cases: 6,886
Active Cases: 14
Total Recovered: 6,649
Deaths: 223

92243

Total Cases: 6,779
Active Cases: 11
Total Recovered: 6,554
Deaths: 214

92227

Total Cases: 4,089
Active Cases: 7
Total Recovered: 3,986
Deaths: 96

92251

Total Cases: 2,772
Active Cases: 10
Total Recovered: 2,712
Deaths: 50

92249

Total Cases: 1,090
Active Cases: 3
Total Recovered: 1,062
Deaths: 25

92250

Total Cases: 1,016
Active Cases: 1
Total Recovered: 972
Deaths: 43

92233

Total Cases: 532
Active Cases: 0
Total Recovered: 521
Deaths: 11

92274

Total Cases: 514

Cases by Zip Code

Cases by Community

Cases by Date & Location

Cases Timeline

Cases Breakdown

Demographics

Deaths

Deaths Timeline

Hospitals Census

ICU Census

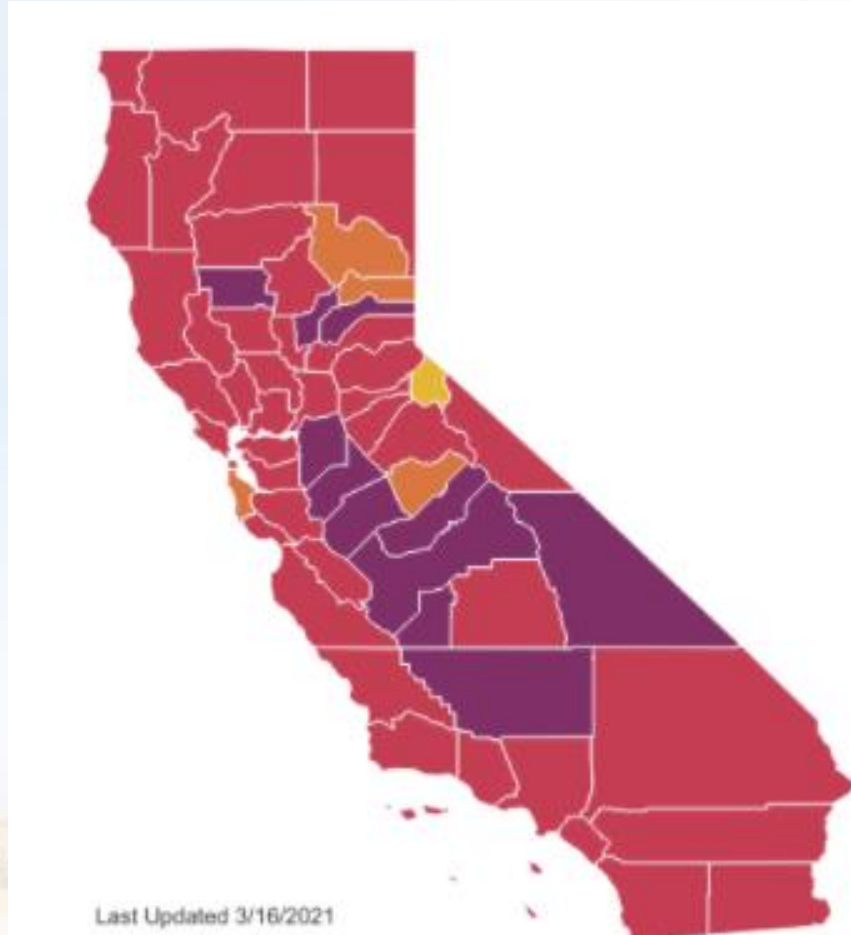
Ventilators

Details

Data Last Updated (Última Actualización):

3/18/2021 8:30 AM

Imperial County Tier Assignment & Metrics



Imperial County

[Close](#)



Southern California Region

Eligible to exit Regional Order effective 1/25/2021

Was placed on Regional Stay Home Order 12/6/2020 3:59 PM

COUNTY RISK LEVEL

Substantial*

Some non-essential indoor business operations are open with modifications

COUNTY METRICS

5.0 New COVID-19 cases per day per 100K

5.0 Adjusted case rate for tier assignment

2.8% Positivity rate (7-day average)

5.0% Health equity quartile positivity rate

3 weeks prior
2/23

■ Widespread

2 weeks prior
3/2

■ Widespread

1 week prior
3/9

■ Substantial

Current
3/16

■ Substantial

Current: Because CA has **2 million** vaccine doses administered in HPI quartile 1



The case rate, test positivity, and health equity metric thresholds must be met to move forward toward more reopening.

WIDESPREAD	SUBSTANTIAL	MODERATE	MINIMAL
<ul style="list-style-type: none">• More than 10.0 daily new cases (per 100k)*• More than 8.0% positive test for entire county**	<ul style="list-style-type: none">• 4.0 – 10.0 daily new cases (per 100k)*• 5.0 – 8.0% positive tests for entire county**• Less than 8.1% positive tests for health equity quartile**	<ul style="list-style-type: none">• 1.0 – 3.9 daily new cases (per 100k)*• 2.0 – 4.9% positive tests for entire county**• Less than 5.3% positive tests for health equity quartile**	<ul style="list-style-type: none">• Less than 1.0 daily new case (per 100k)*• Less than 2.0% positive tests for entire county**• Less than 2.2% positive tests for health equity quartile**

When CA has **4 million** vaccine doses administered in HPI quartile 1



The case rate, test positivity, and health equity metric thresholds must be met to move forward toward more reopening.

WIDESPREAD	SUBSTANTIAL	MODERATE	MINIMAL
<ul style="list-style-type: none">• More than 10.0 daily new cases (per 100k)*• More than 8.0% positive test for entire county**	<ul style="list-style-type: none">• 6.0 – 10.0 daily new cases (per 100k)*• 5.0 – 8.0% positive tests for entire county**• Less than 8.1% positive tests for health equity quartile**	<ul style="list-style-type: none">• 2.0 – 5.9 daily new cases (per 100k)*• 2.0 – 4.9% positive tests for entire county**• Less than 5.3% positive tests for health equity quartile**	<ul style="list-style-type: none">• Less than 2.0 daily new cases (per 100k*)• Less than 2.0% positive tests for entire county**• Less than 2.2% positive tests for health equity quartile**

If both the test positivity and health equity metric are especially low, and the case rate is declining but does not yet meet less restrictive tier's level, a county can still move forward towards more reopening. See [rules on accelerated progression](#).

<https://covid19.ca.gov/safer-economy/#county-status>



Total Doses Administered

40,261

Total de dosis administradas

Partially Vaccinated

28,932

Parcialmente vacunados

Fully Vaccinated

11,329

Vacunados totalmente

% Partially Vaccinated

15.10%

% Parcialmente vacunados

% Fully Vaccinated

5.91%

% Completamente vacunados

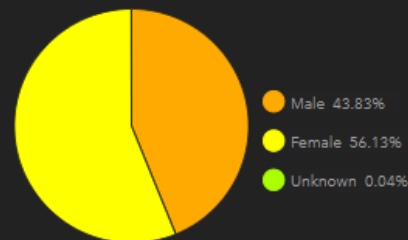
Data Last Updated (Última Actualización):

03/18/2021 9:10 AM

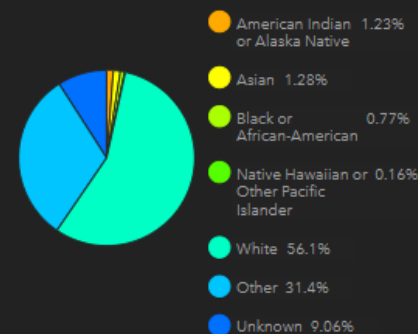
Partially Vaccinated by Age Group



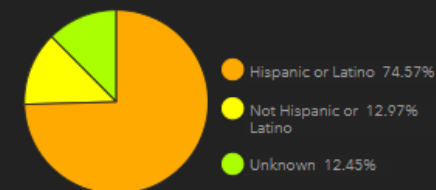
Partially Vaccinated by Gender



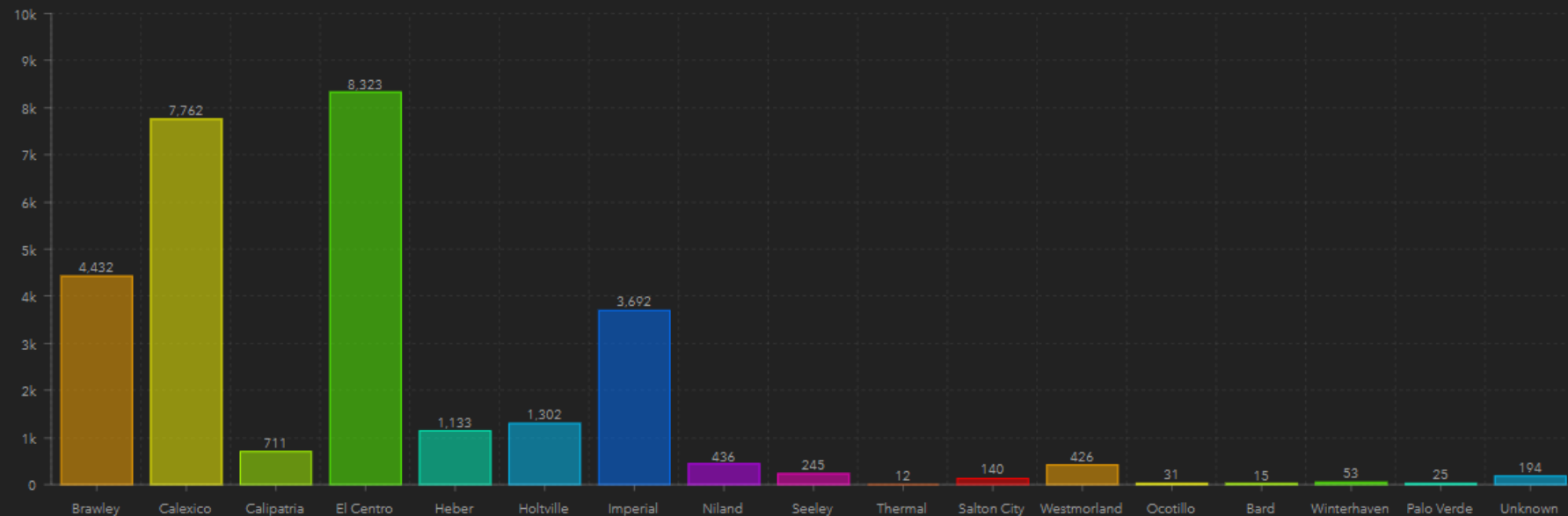
Partially Vaccinated by Race



Partially Vaccinated by Ethnicity



Partially Vaccinated by City



Partially Vaccinated

Fully Vaccinated

Details

COVID-19 Vaccine Prioritization Overview

Updated Guidance: <https://www.cdph.ca.gov/Programs/CID/DCDC/Pages/COVID-19/VaccineAllocationGuidelines.aspx>

March 11, 2021 updated CA guidance

Vaccinating as supplies allow

Phase 1a

December 18, 2020

Tiers 1-3
Healthcare

Long-term Care Residents

Phase 1b, Tier 1

Seniors 65+

Emergency
Services

Education
& Childcare

Food &
Agriculture

16-64 w/health
conditions or disabilities

Congregate
Living Spaces

Transportation
& Logistics

COVID-19 Vaccine Received/Pending

Dec 17, 2020 – Mar 17, 2021

Received

1st & 2nd DOSES

56,880

Pending

NEXT WEEK

1st doses

8,940

Pfizer, Moderna, J&J



- Details
- View Indicators
- Rank
- Pool
- Create Custom Score
- Data Upload
- Report/Export
- About

HEALTHCARE PROVIDER NETWORKS

DECEMBER 18, 2020

ENROLLED COVID-19 Vaccine PROVIDERS

2 El Centro
1 Brawley

IF MORE PROVIDERS ENROLL IN THE STATE'S VACCINE PROGRAM, THE GREATER THE ACCESS TO COVID-19 VACCINE CLOSE TO WHERE PEOPLE LIVE

EACH PROVIDER MUST HAVE THEIR PROTOCOLS AND PLANS IN PLACE TO DISPENSE COVID-19 VACCINE

California Healthy Places Index

Census Tracts

Drag handles to change display

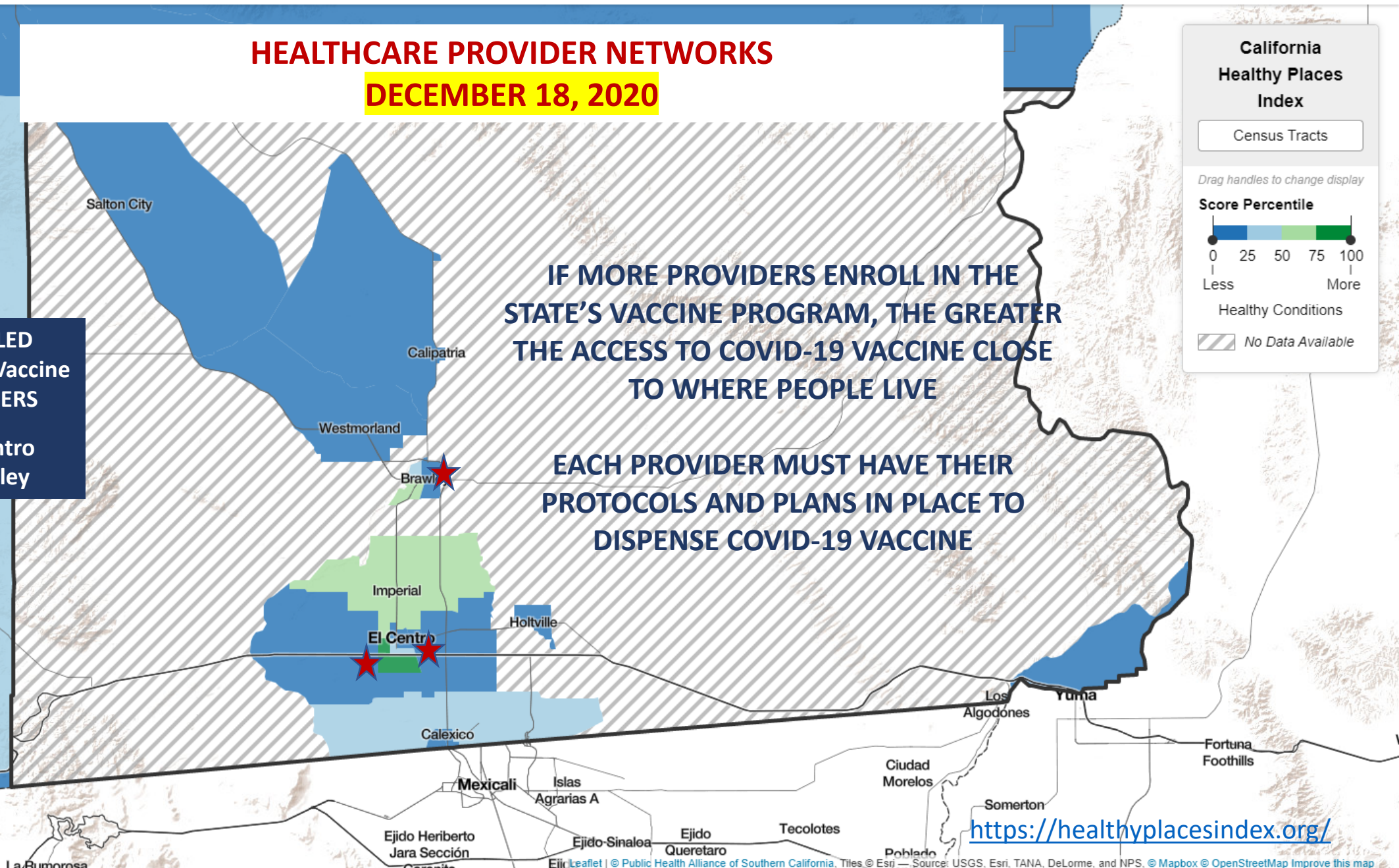
Score Percentile

0 25 50 75 100

Less More

Healthy Conditions

No Data Available





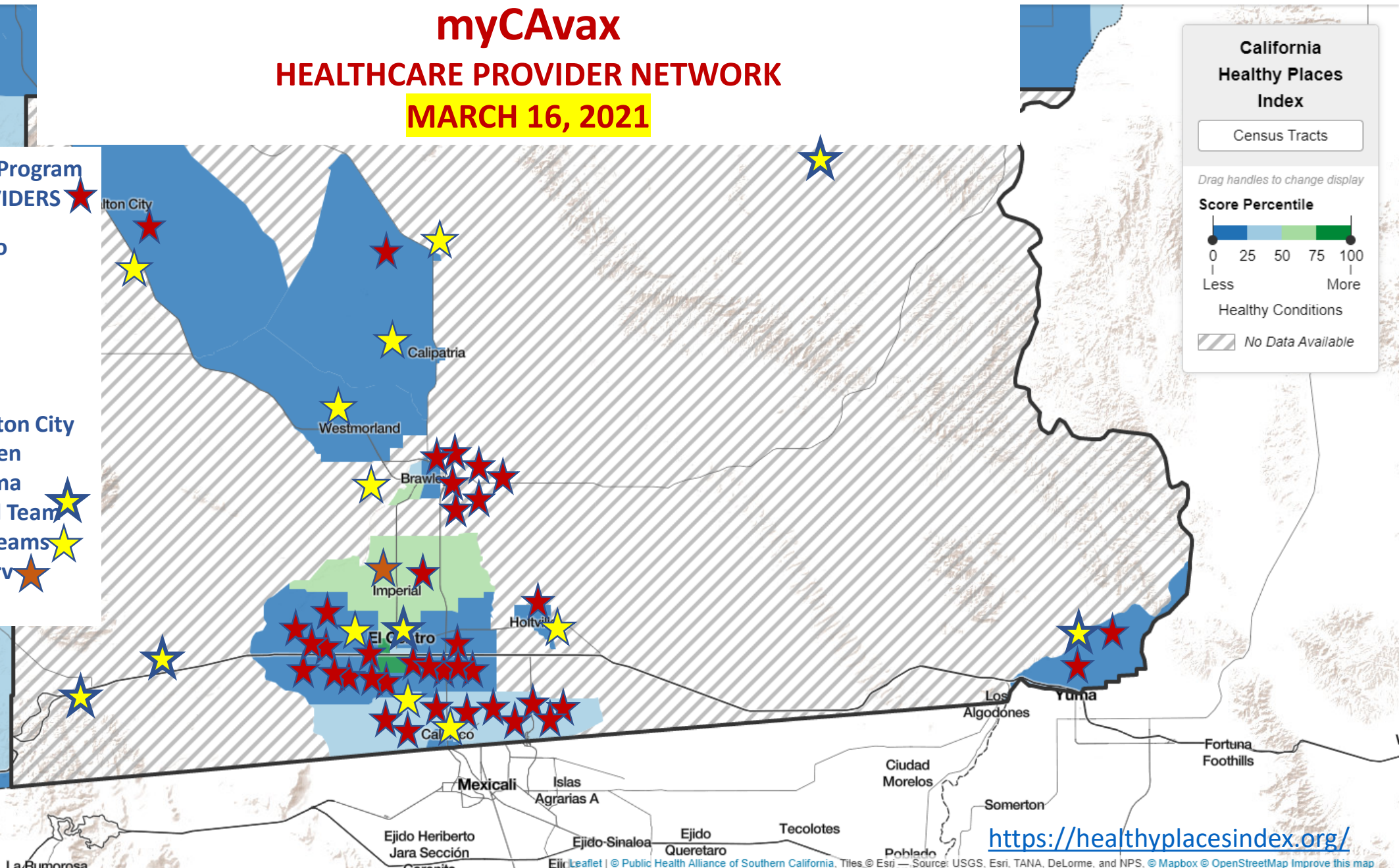
myCAvax

HEALTHCARE PROVIDER NETWORK

MARCH 16, 2021

**COVID-19 Vaccine Program
ENROLLED PROVIDERS**

- 16 El Centro
- 7 Brawley
- 9 Calexico
- 1 Holtville
- 1 Niland
- 1 Imperial
- 1 Westshores/Salton City
- 1 Winterhaven
- 1 IHS/Ft. Yuma
- 1 NG/PHD Travel Team
- Other Mobile Teams
- 1 OptumServ



COVID-19 Vaccine Highlights

<https://covid19.ca.gov/vaccines/>

Vaccination through established healthcare provider networks is key to increasing access in our community

- 30+ COVID-19 vaccine dispensing points
- At least 3 local pharmacies participating in the [Federal Retail Pharmacy Program](#)
- 5 provider agencies are now live with [MyTurn](#) appointments
 - 1 hospital, 2 pharmacies, 1 OptumServe vaccination site, Public Health Department
 - Additional providers being onboarded
- At least 3 vaccine provider agencies doing pop-up/mobile clinics, including the National Guard/Public Health travel team
- [Local vaccine providers](#) are immunizing 65+, 16-64 w/health conditions & disabilities, and all others in Phases 1a & 1b

COVID-19 Vaccine Clinics

Coordinated/Conducted by
Imperial County Public Health Department

ONGOING EFFORTS

- Travel/Pop-up Clinics (cool weather)
 - In partnership with CA National Guard
- Curbside Clinics (cool weather)
- Drive-thru Clinics (cool weather)
 - In partnership with multiple agencies
- Fixed Site Clinics (warm-weather)



Please note the Imperial County Public Health Department will be closed to all walk-in services for the public. Department staff will be available to provide assistance by phone to members of the community who have questions related to any of the Department's [essential services](#).

Phone assistance will be available Monday through Friday from 8:00 am to 12:00 pm and 1:00 pm to 5:00 pm. The office will be closed for lunch from 12:00 pm to 1:00 pm. This shall remain in effect until further notice.

[Contact Us](#)

[How Do I...? ▾](#)

Search



Imperial County Public Health Department

[Home](#)

[About Us](#)

[News Media](#)

[Alerts and Recalls](#)

[Be Prepared](#)

[Get Involved](#)

[Report a Health Issue](#)

[Forms](#)

COVID-19 Vaccine

Vaccinate Imperial County



Health Information and Resources

[Data & Statistics](#)

[Health & Wellness](#)

[Health Insurance](#)

[Healthy Facts](#)

[COVID-19](#)

[COVID-19 Data](#)

[COVID-19 Vaccine](#)

[Vaccine Providers](#)

[Vaccine Phases](#)

[Vaccine Resources & Links](#)

[Health Information And Resources](#) / [Healthy Facts](#) / [Covid 19](#) / [Covid 19 Vaccine](#) / [Vaccine Providers](#)

Vaccine Providers

Select language: [English ▾](#)

Below are links to help individuals find a site that may be receiving vaccine based on priority group you may fall in:

[Imperial County Public Health Department Clinics](#)

[Brawley](#)

[Calexico](#)

[El Centro](#)

[Holtville](#)

[Imperial](#)

Vaccines

Last updated March 17, 2021 at 2:25 PM

Get vaccinated—it's safe, effective, and free

Appointments are available for people with a high chance of exposure, high-risk, and those 65 or older. Sign up at myturn.ca.gov or call (833) 422-4255 to find out if it's your turn. If you're eligible, you can schedule an appointment, or register to be notified when one is available.

[Sign up for the vaccine](#)



Vaccination is one of the most important tools to end the COVID-19 pandemic. The State will equitably distribute a safe and effective vaccine to everyone in California who wants it. We expect to have enough supplies to vaccinate most Californians by summer 2021.

On this page:

- > [When you can get vaccinated](#)
- > [How to get vaccinated](#)
- > [How vaccines work](#)
- > [What to expect after vaccination](#)
- > [Spread the news about the vaccines](#)
- > [Vaccination progress dashboards](#)
- > [Questions and answers](#)

<https://covid19.ca.gov/vaccines/>

COVID-19 vaccination: Find out if it's your turn

Everyone in California will have an opportunity to get vaccinated against COVID-19 at no cost. But our vaccination supply is limited right now. So we're starting with the groups who are at highest risk, like people with a high chance of exposure and people 65 and older.

Are you eligible?

Find out if it's your turn by answering a few questions. It only takes a few minutes. If you're eligible and vaccine appointments are available through My Turn, you can schedule one. If it's not your turn yet or appointments are not available, you can register to be notified when you're eligible or when appointments open up.

NOTICE: Due to the high demand and limited supply of COVID-19 vaccines, appointments may take a few weeks to schedule. We are adding more appointments regularly and continue to expand statewide.

You can register to receive updates about new appointments and locations.

English



Register and check my eligibility

<https://myturn.ca.gov/>

COVID-19 vaccines are limited and **appointments are required** at most locations. Check with your local health department first to confirm you can get a vaccine →

<https://vaccinefinder.org/>

VaccineFinder

Home

Find Vaccines

COVID-19 VACCINE FAQ

PROTECT YOUR FAMILY AND COMMUNITY

**Get vaccinated at a
location near you**



FIND COVID-19 VACCINES

Select language: English ▼

OptumServe testing in Imperial County

[COVID-19 Mobile Test Site](#)

Follow the Imperial County COVID-19
Mobile Testing Locator page on
[Facebook](#)



Brawley Senior Center

575 J. Street
Brawley, CA 92227



Mobile testing locator:

<https://www.facebook.com/Imperial-County-Covid-19-Mobile-Testing-Locator-105375364765945>

Imperial County COVID-19 Mobile Testing

MAR. 22 THROUGH MAR. 26

Monday, March 22, 2021

Stark Filed - 830 S. 4th St., El Centro, CA 92243

Open to public from **7:00am – 7:00pm** for community testing.

Wednesday, March 24, 2021

Consulado de Mexico – 408 Heber Avenue, Calexico, CA 92231

Open to public from **1:00am – 1:00pm** for community testing

Thursday, March 25, 2021

Comite Civico Del Valle – 235 Main Street, Brawley, CA 92227

Open to public from **7:00am – 7:00pm** for community testing

Friday, March 26, 2021

Hector Mario Esquer Building – 850 Eady Avenue, Calexico, CA 92231

Open to public from **7:00am – 7:00 pm** for community testing.



Find out more about our mobile testing times and dates: [Facebook.com/iccovid19mobiletesting](https://www.facebook.com/iccovid19mobiletesting)

Additional testing sites continue to be available in Imperial County at a number of private healthcare providers and pharmacies.

For a list of additional test sites, please visit: <https://tinyurl.com/y2z84vov>



Thank you



www.icphd.org